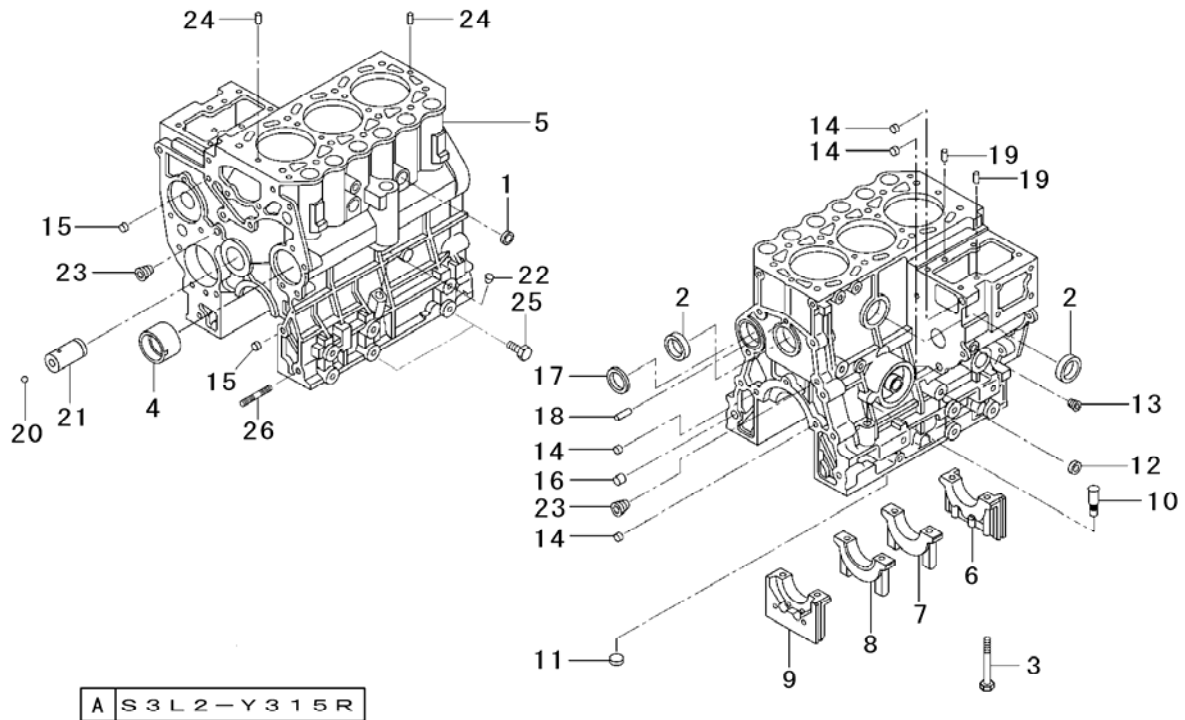
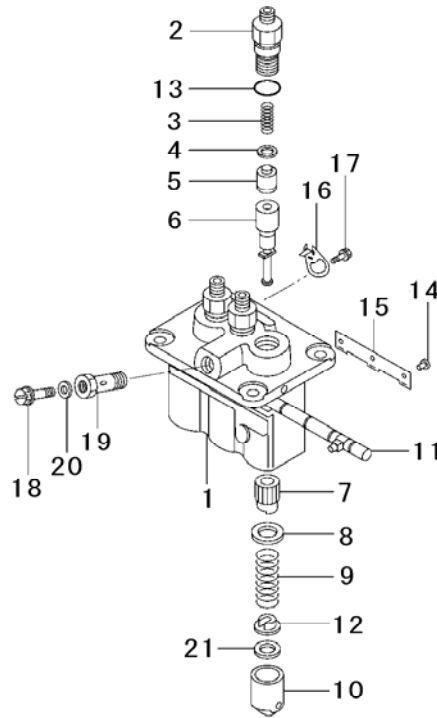


FIG. 101 CRANKCASE ASSY



Key No.	Parts No.	Parts Name.	Q`ty				R/P	Application	Description	Remarks
			A							
1~24	31B07-52030	BLOCK ASSY	1							
1~9	*	SUB ASSY,cylind	1							
1	04826-22000	CAP,sealing	2							
2	04826-23500	CAP,sealing	2							
3	31A07-00801	BOLT,bearing	8							
4	31A07-03100	BUSH,camshaft	1							
5	*	BLOCK,cylinder	1							
6~9	*	CAP SET,metal	1							
6	*	CAP,metal front	1							
7	*	CAP,metal no.2	1							
8	*	CAP,metal no.3	1							
9	*	CAP,metal rear	1							
10	MM430613	GUIDE GAUGE	1							
11	MF665532	CAP,sealing(12)	1							
12	F5014-14000	CAP,sealing(14)	1							
13	MS661140	PLUG,taper	1							
14	MS471104	BUSHING,knock	4							
15	MS471105	BUSHING,knock	2							
16	MS471110	BUSHING,knock	1							
17	MS665511	PLUG,expansion	1							
18	MF472404	PIN,dowel	1							
19	MM409645	PIN,dowel	2							
20,21	31A23-00051	SHAFT ASSY,idle	1							
20	0800 0000 600	BALL,steel	1							
21	*	SHAFT,idler	1							
22	MD024256	PLUG,taper	1							
23	04827-90130	PLUG,taper	2							
24	F2846-05000	PIN,dowel	2							
25	F1035-12025	BOLT	4							
26	31A07-02500	STUD	2							

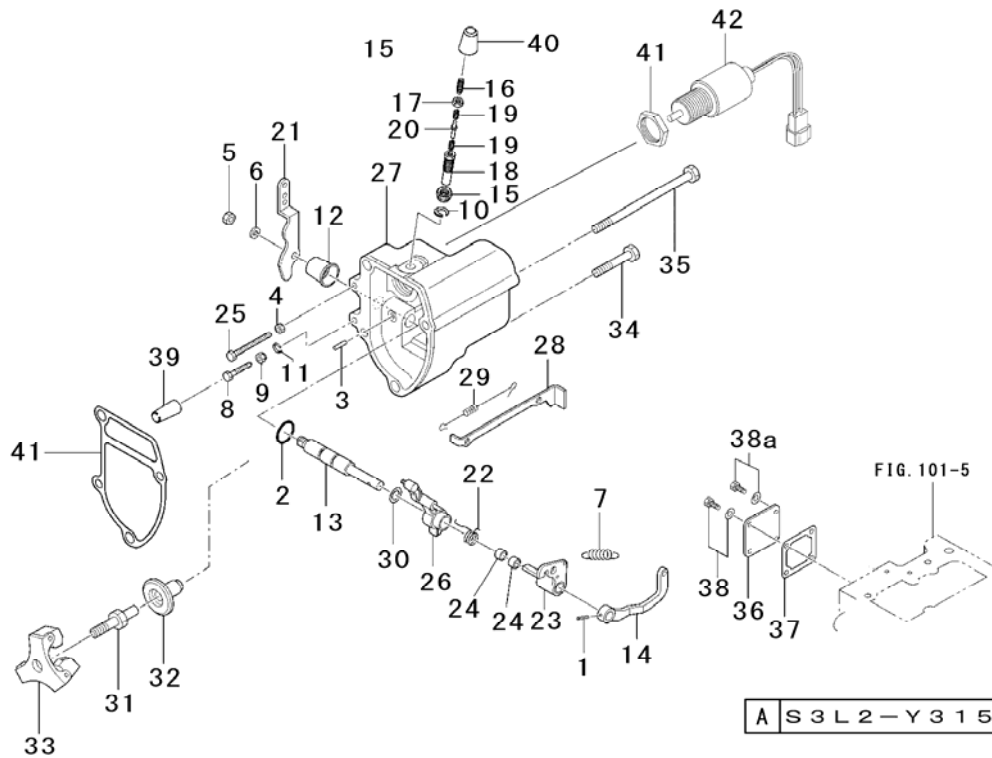
FIG. 110 FUEL INJECTION PUMP



A S 3 L 2 - Y 3 1 5 R

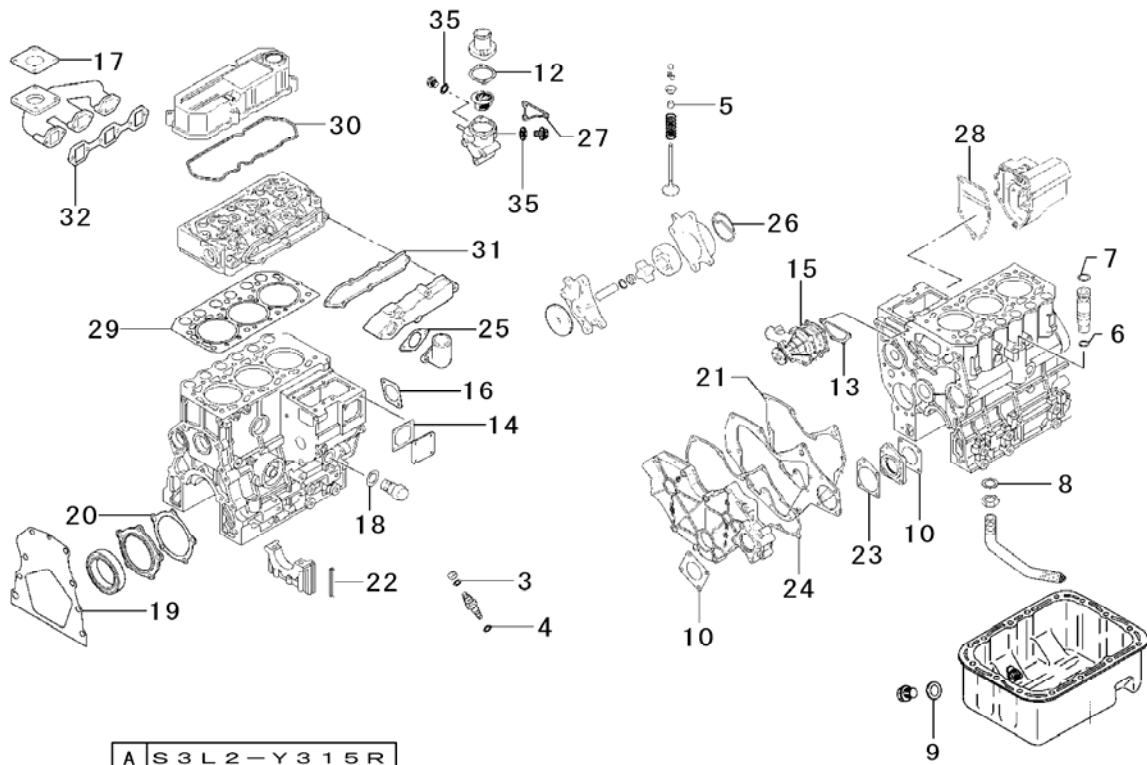
Key No.	Parts No.	Parts Name.	Q'ty				R/P	Application	Description	Remarks
			A							
1~21	31B65-14090	PUMP ASSY,injec	1							
1	47X01-06100	HOUSING ASSY	1							
2	47X01-13200	HOLDER,delivery	3							
3	47X01-13300	SPRING,delivery	3							
4	09013-70130	GASKET,delivery	3							
5	47X01-07700	VALVE SUB ASSY	3							
6	47X01-07600	ELEMENT SUBASSY	3							
7	09016-10210	SLEEVE,control	3							
8	MM501098	SEAT,spring	3							
9	09016-40170	SPRING,plunger	3							
10	09017-00170	TAPPET SUB ASSY	3							
11	09021-00470	RACK ASSY,contr	1							
12	09030-10060	SEAT,spring	3							
13	47X01-22700	O-RING	3							
14	MM500370	PIN,tappet	3							
15	09046-70040	PLATE	1							
16	09006-80020	PLATE,adjusting	2							
17	MM514195	BOLT,head	2							
18	09024-40180	SCREW,air bleed	1							
19	09024-50210	SCREW,hollow	1							
20	MM500441	WASHER,plate	1							
21	09031-10110	SHIM	AR						t=0.20	
	09031-10160	SHIM	AR						t=0.25	
	09031-10120	SHIM	AR						t=0.30	
	MM500315	SHIM	AR						t=0.35	
	09031-10130	SHIM	AR						t=0.40	
	09031-10280	SHIM	AR						t=0.45	
	09031-10140	SHIM	AR						t=0.50	
	09031-10300	SHIM	AR						t=0.55	
	09031-10010	SHIM	AR						t=0.60	
	09031-10310	SHIM	AR						t=0.65	

FIG. 113 GOVERNOR PARTS



Key No.	Parts No.	Parts Name.	Q`ty				R/P	Application	Description	Remarks
			A							
1~30	31B63-33010	CASE ASSY,gover	1							
1	0550 0003 020	PIN,spring	1						φ 3 × 20	
2	0830 0100 101	O-RING	1						φ 10	
3	K8712630	PIN,grooved	1							
4	F2300-06000	NUT	1							
5	F2320-08000	NUT,jam	1							
6	F2515-08000	WASHER,spring	1							
7	MM433673	SPRING,governor	1							
8,9	30L63-00030	BOLT ASSY,speed	1							
8	30L63-02100	BOLT,high speed	1							
9	30L63-02300	NUT,high speed	1							
10	30L63-00700	C-RING	1							
11	30L63-12600	C-RING	1							
12	31A63-01800	COVER,gov shaft	1							
13	31A63-02600	SHAFT,governor	1							
14	31A63-02700	LEVER,spring	1							
15~20	31A64-01080	SPRING SET	1							
15	30L63-00600	NUT	1							
16	MD065628	SCREW,adjusting	1							
17	MD000961	NUT	1							
18	31A64-00200	CASE	1							
19	31A64-01800	SPRING	2							
20	MM434541	STOPPER,spring	1							
21	31A63-04700	LEVER,speed	1							
22	31A63-05300	SPRING,start	1							
23,24	31A63-01010	LEVER ASSY,tens	1							
23	*	LEVER,tension	1							
24	MM406420	BEARING,needle	2							
25	30L63-02200	BOLT,idle set	1							
26	31A63-15500	LEVER,governor	1							
27	31A63-32100	CASE,governor	1							
28	31B63-00400	TIE-ROD	1							
29	31B63-00500	SPRING,tie-rod	1							
30	31A63-15200	SHIM,shaft	1							
31	31A63-10300	SHAFT,sleeve	1							

FIG. 120 REPAIR GASKET KIT



Key No.	Parts No.	Parts Name.	Q'ty				R/P	Application	Description	Remarks
			A							
1~41	31B94-16010	GASKET KIT	1							
1	MD050317	GASKET,drain	2						Not Shown	
2	F3150-00900	GASKET	1						Not Shown	
3	MD068355	GASKET	3							
4	MD070717	GASKET	3							
5	MD115472	SEAL	6							
6	MD701788	O-RING	1							
7	F3150-01800	O-RING	1							
8	MF660036	GASKET	1							
9	F4202-14000	GASKET	2						Not Shown	
10	30A11-00101	GASKET,cover	2							
11	31A46-01200	GASKET	2						Not Shown	
12	31A46-11200	GASKET,thermo	1							
13	30H45-00101	GASKET,water	1							
14	30A63-00101	GASKET,cover	1							
15	MM409326	GASKET	1							
16	30A66-00101	GASKET,start	1							
17	30A30-00200	GASKET	1							
18	34340-00700	GASKET	1							
19	31A07-02401	GASKET,rear	1							
20	31A07-11701	GASKET,case	1							
21	31A07-11901	GASKET,plate	1							
22	31A07-12200	SEAL,side	4							
23	31A11-05201	GASKET,housing	1							
24	31A11-11101	GASKET,gear	1							
25	31A30-00801	GASKET,inlet	1							
26	31A35-02300	PACKING,body	1							
27	31A46-10101	GASKET,case	1							
28	31A63-12200	GASKET,case	1							
29	31B01-23200	GASKET,head	1							
30	31B04-13201	GASKET,rocker	1							
31	31B30-00800	GASKET,inlet	1						Not Shown	
32	31B32-01200	GASKET,exh	1							
33	32A91-05100	GASKET,liquid	1						Not Shown	
34	49168-15200	GASKET	3						Not Shown	

Parts No.	Page	Key No.
A647X50170	21	12
A930X94570	21	6
F1025-08022	16	3
F1035-05010	7	8
F1035-06018	13	7
F1035-08016	7	23
F1035-08020	2	8
	10	10
	18	12
F1035-08045	3	6
F1035-12025	1	25
F1435-08025	18	11
F1540108030	3	11
F1540108040	4	5
F1805-06025	9	9
F2300-06000	14	4
F2300-10000	19	10
F2305-18000	6	20
F2320-08000	14	5
F2320-16000	16	12
F2325-08000	7	10
F2500-08000	19	8
F2500-10000	19	12
F2500-18000	6	18
F2515-08000	3	17
	14	6
F2515-10000	19	3
	19	11
F2515-18000	6	19
F2846-05000	1	24
F2846-06000	6	26
F2850-03014	16	5
F3150-00900	22	2
F3150-01800	16	6
	22	7
F3200-01900	7	9
F4202-10000	23	41
F4202-14000	22	9
	23	39
F4300-02000	17	24
F5014-14000	1	12
F5014-25000	5	2
F5014-35000	5	1
K8712630	14	3
M357X81371	20	11
M371X80171	20	6
M800X59471	20	17
MD000961	14	17
MD001380	17	11
MD001521	7	21
MD006704	6	8
MD008762	3	7
MD008784	4	6
MD009014	17	10
MD016483	7	5
MD021105	6	9

Parts No.	Page	Key No.
MD021204	7	15
MD024256	1	22
MD040556	6	23
MD041704	17	17
MD050316	3	18
MD050317	3	19
	22	1
MD065628	14	16
MD068353	9	3
MD068355	9	2
	22	3
MD070717	9	1
	22	4
MD075460	17	18
MD107589	10	23
MD115472	7	6
	22	5
MD602210	20	20
MD603493	12	
MD603495	12	
MD603496	12	
MD607416	20	22
MD607420	20	19
MD607432	20	1
MD607539	20	13
MD607540	20	14
MD611556	21	3
MD611928	21	8
MD618927	21	1
MD701788	16	4
	22	6
MD701789	16	9
MD703856	7	20
MD712517	8	6
MF100026	18	13
MF100064	15	34
MF140026	19	9
MF140227	17	19
MF240031	17	2
MF240051	3	3
	3	21
	4	11
MF241223	16	10
MF241224	15	38
	15	38a
MF241229	10	22
MF241242	17	16
MF241252	13	8
MF241253	18	7
MF241259	18	6
MF241266	17	12
	18	8
MF241280	5	13
MF241282	19	1
MF244860	17	7
MF244863	17	8

Parts No.	Page	Key No.
MF430005	3	16
MF472404	1	18
MF476018	7	22
MF476215	4	9
	6	17
MF660036	16	13
	22	8
MF665532	1	11
MK66112000	10	11
MM316248	17	13
MM398237	3	15
MM400380	4	7
MM406420	14	24
MM408240	2	15
MM408470	5	12
MM409040	10	1
MM409041	10	2
MM409042	10	3
MM409043	10	4
MM409044	10	5
MM409045	10	6
MM409046	10	7
MM409047	10	8
MM409048	10	9
MM409150	15	36
MM409303	17	1~4
MM409304	17	3
MM40931302	17	20
MM409326	17	4
	22	15
MM409327	17	1
MM40941001	20	1~22
MM409427	19	2
MM409645	1	19
MM40967101	15	42
MM409980	16	19
MM413206	10	12
MM430131	9	11
MM43041901	16	8
MM43059801	16	4~8
MM430613	1	10
MM430614	9	8
MM430703	9	7
MM43330601	7	4
MM433673	14	7
MM434541	14	20
MM435249	23	38
MM43594101	12	1~8
MM436867	18	15
MM43721501	2	12
MM500315	11	
MM500370	11	14
MM500441	11	20
MM501098	11	8
MM501846	12	2
MM502329	20	3

Parts No.	Page	Key No.
MM502330	20	4
MM502331	20	5
MM502332	20	18
MM502341	20	15
MM502342	20	16
MM502346	20	21
MM502347	20	10
MM502396	20	12
MM502398	20	2
MM502568	21	5
MM502574	21	13
MM502575	21	14
MM502578	21	2
MM514045	12	8
MM514195	11	17
MM514380	12	7
MS401327	3	14
MS401426	3	12
MS401435	3	13
MS470059	4	4
MS471104	1	14
MS471105	1	15
MS471110	1	16
MS602106	2	10
MS603022	10	20
MS604032	9	12
MS660164	10	21
MS660167	10	19
MS660169	9	13
MS661140	1	13
	5	9
MS665511	1	17
S930P12070	20	9
S930P12170	20	8
04826-22000	1	1
04826-23500	1	2
04827-90130	1	23
0550 0003 020	14	1
05946-01000	10	13
05946-01601	17	14
	23	35
0750 0560 024	6	25
0800 0000 600	1	20
0830 0100 101	14	2
0830 0200 600	23	40
09006-80020	11	16
09013-70130	11	4
09016-10210	11	7
09016-40170	11	9
09017-00170	11	10
09021-00470	11	11
09024-40180	11	18
09024-50210	11	19
09030-10060	11	12
09031-10010	11	
09031-10110	11	21

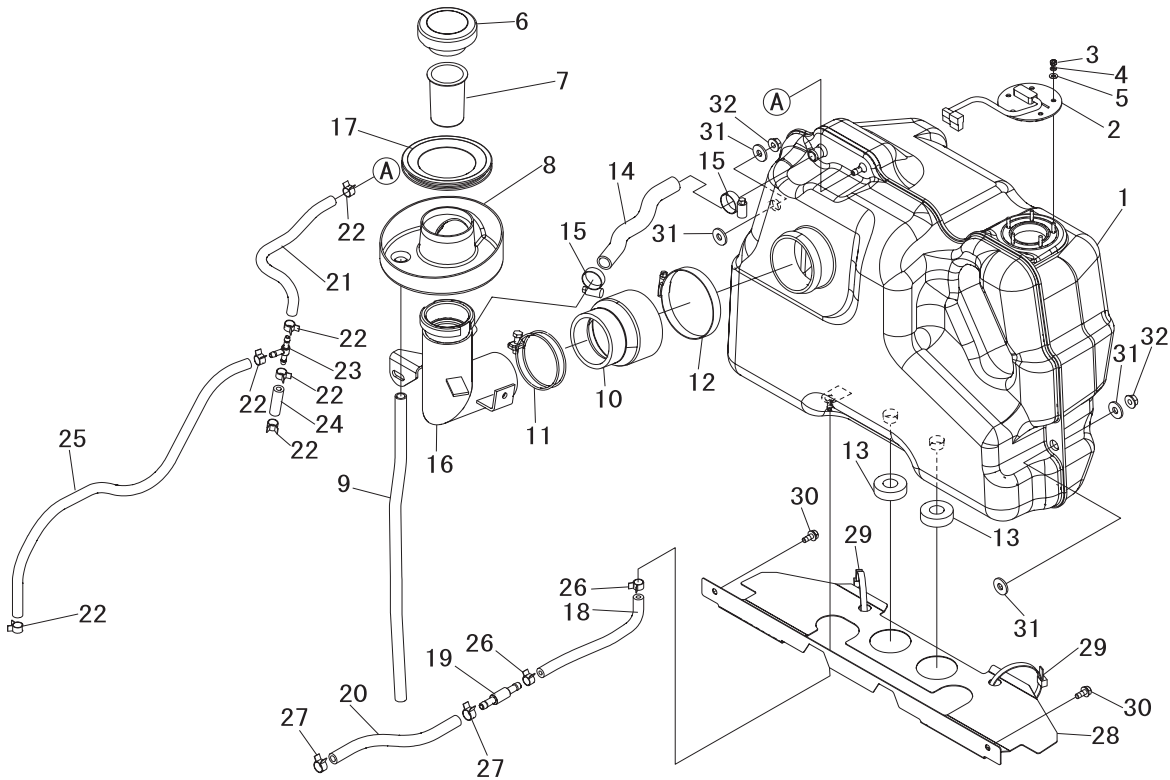
Parts No.	Page	Key No.
09031-10120	11	
09031-10130	11	
09031-10140	11	
09031-10160	11	
09031-10280	11	
09031-10300	11	
09031-10310	11	
09046-70040	11	15
09311-03840	12	1
09312-10380	12	4
09312-70310	12	3
09317-40070	12	5
09317-51830	12	
09317-51850	12	
09317-51890	12	
09317-51950	12	
09317-51970	12	
09317-51990	12	
09340-05060	12	6
30405-31403	4	10
30A11-00101	3	10
	22	10
30A19-00040	6	12
30A19-10010	6	13
30A19-10020	6	14
30A19-10030	6	15
30A30-00200	18	16
	22	17
30A61-03800	10	20,21
30A63-00101	15	37
	22	14
30A66-00101	19	4
	22	16
30A87-10043	15	42,43
30A87-20403	15	43
30H45-00101	17	6
	22	13
30H66-02300	19	14
30L07-00700	2	18
30L63-00030	14	8,9
30L63-00600	14	15
30L63-00700	14	10
30L63-02100	14	8
30L63-02200	14	25
30L63-02300	14	9
30L63-02400	15	39
30L63-12600	14	11
31A01-01201	5	3
31A01-01301	5	4
31A01-02500	5	5
31A01-02800	5	6
31A01-21100	5	10
31A03-13600	5	7
31A04-00700	7	7
31A04-01301	7	3
31A04-11024	7	10~12

Parts No.	Page	Key No.
31A04-20200	7	2
31A04-30100	7	1
31A04-34100	7	13
31A04-34300	7	14
31A05-00300	4	12
31A05-01300	4	13
31A07-00801	1	3
31A07-02300	2	7
31A07-02401	2	14
	22	19
31A07-02500	1	26
31A07-03100	1	4
31A07-11601	2	5
31A07-11701	2	6
	22	20
31A07-11901	3	2
	22	21
31A07-12200	2	17
	22	22
31A08-04102	2	16
31A09-01010	2	1
31A09-01020	2	2
31A09-01030	2	3
31A09-01040	2	4
31A11-00802	3	4
31A11-02100	3	1
31A11-05101	3	8
31A11-05201	3	9
	22	23
31A11-11101	3	5
	22	24
31A17-00010	6	4
31A17-00020	6	5
31A17-00030	6	6
31A17-09101	6	1
31A17-09201	6	2
31A17-09301	6	3
31A17-10602	6	7
31A21-03800	6	22
31A23-00051	1	20,21
31A23-00600	8	3
31A23-00800	8	2
31A23-01023	8	3,4
31A23-01302	8	7
31A23-01402	8	1
31A23-01502	8	5
31A30-00300	18	4
31A30-00801	18	5
	22	25
31A32-02100	18	14
31A35-02300	16	2
	22	26
31A35-05041	16	11
31A35-30010	16	1
31A40-02100	16	15
31A45-20700	17	9

Parts No.	Page	Key No.
31A46-00020	17	21,22
31A46-01200	22	11
31A46-02300	2	9
31A46-05010	17	24,25
31A46-10101	17	5
	22	27
31A46-11200	17	23
	22	12
31A48-01100	17	15
31A60-00300	10	17
31A61-01200	9	15
31A61-01500	9	14
31A61-07101	9	4
31A61-07201	9	5
31A61-07301	9	6
31A62-00300	13	1~5
31A62-00310	13	1
31A62-00312	13	2
31A62-00317	13	3
31A62-00318	13	4
31A62-00319	13	5
31A63-01010	14	23,24
31A63-01800	14	12
31A63-02301	15	35
31A63-02600	14	13
31A63-02700	14	14
31A63-04700	14	21
31A63-05300	14	22
31A63-10300	14	31
31A63-11061	15	33
31A63-12200	15	41
	22	28
31A63-15200	14	30
31A63-15500	14	26
31A63-25101	15	32
31A63-32100	14	27
31A64-00200	14	18
31A64-00800	15	40
31A64-01080	14	15~20
31A64-01800	14	19
31A65-00201	10	14
31A65-00800	10	15
31A68-00402	21	1~14
31A68-02100	19	7
31A68-20300	19	13
31A90-00300	16	14
31B01-13040	5	1~9
31B01-23200	5	11
	22	29
31B04-00014	7	8~18
31B04-01010	7	15~16
31B04-03011	4	1,2
31B04-13201	4	3
	22	30
31B05-00103	4	8
31B06-07800	4	15

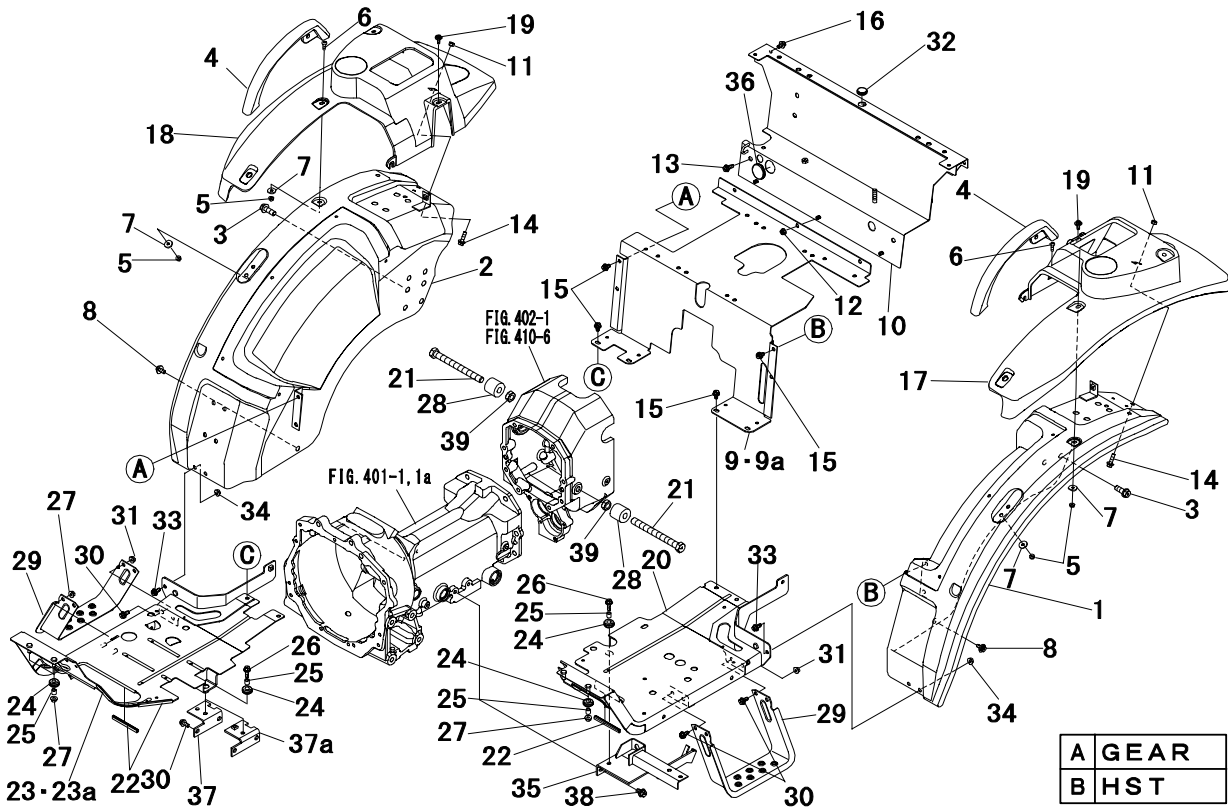
Parts No.	Page	Key No.
31B07-04400	2	13
31B07-52030	1	1~24
31B13-10021	3	18~20
31B19-01023	6	8~11
31B20-00204	6	16
31B20-02601	6	21
31B21-02070	6	23,24
31B30-00040	18	1,2
31B30-00800	18	3
	22	31
31B30-00902	23	37
31B32-00100	18	9
31B32-01200	18	10
	22	32
31B42-21700	16	18
31B61-02600	9	10
31B61-05300	10	18,19
31B61-05311	10	18
31B61-13100	9	11~15
31B62-01200	13	6
31B63-00400	14	28
31B63-00500	14	29
31B63-33010	14	1~30
31B65-00200	10	16
31B65-11300	7	19
31B65-14090	11	1~21
31B66-04100	19	6
31B94-16010	22	1~41
32A04-02401	7	12
32A36-05010	16	16
32A66-03102	19	5
32A91-05100	22	33
32C04-04501	7	17
32C04-06101	7	18
32C39-00200	23	36
32C46-04100	2	11
34340-00700	16	17
	22	18
47X01-06100	11	1
47X01-07600	11	6
47X01-07700	11	5
47X01-13200	11	2
47X01-13300	11	3
47X01-22700	11	13
47X11-00700	20	7
47X11-02304	21	11
47X11-02305	21	4
47X11-02311	21	7
47X11-02312	21	9
47X11-02313	21	10
49168-15200	22	34

FIG. 201 FUEL LINE (1/2)



Key No.	Parts No.	Parts Name.	Q` ty				R/P	Application	Description	Remarks
			ALL							
1~5	1956 0102 000	TANK FUEL ASSY	1							
1	1956 0103 000	TANK FUEL	1							
2	1044 0116 000	FUEL UNIT	1							
3	A300 0104 002	NUT	5					M4		
4	A360 0100 402	WASHER,spring	5					M4		
5	0350 0120 410	WASHER	5					M4		
6	1956 0101 000	CAP TANK	1							
7	0980 6000 001	FILTER	1							
8	1956 0108 000	TRAY FUEL	1							
9	0980 4100 502	PIPE,vinyl	1					φ 10 × 500		
10	1956 0106 000	HOSE	1							
11	0050 1100 710	CLAMP,hose	1					φ 71		
12	0050 5000 900	CLAMP HOSE	1							
13	1956 0124 000	RUBBER,cushion	2							
14	1956 0141 000	HOSE	1							
15	HA23 0108 000	CLIP,hose	2							
16	1957 0105 AG0	JOINT	1							
17	1956 0139 000	SEAL,fuel	1							
18	0981 0060 160	HOSE	1					φ 6 × 160		
19	1044 0442 000	JOINT PIPE	1							
20	0981 0080 200	HOSE	1					φ 8 × 200		
21	0981 0060 250	HOSE	1					φ 6 × 250		
22	0050 3111 005	CLAMP,hose	6					φ 11		
23	3694 0844 000	JOINT B	1							
24	0981 0060 040	HOSE	1					φ 6 × 40		
25	0981 0060 500	HOSE	1					φ 6 × 500		
26	0050 3111 005	CLAMP,hose	2					φ 11		
27	0050 3113 007	CLAMP,hose	2					φ 13		
28	1956 0133 003	PLATE	1							
29	0051 1070 070	BAND,wire	2							
30	H144 0106 016	BOLT,w/washer	2					M6 × 16		
31	0350 0150 822	WASHER	4					M8		
32	F301 0108 000	NUT,flange	2					M8		

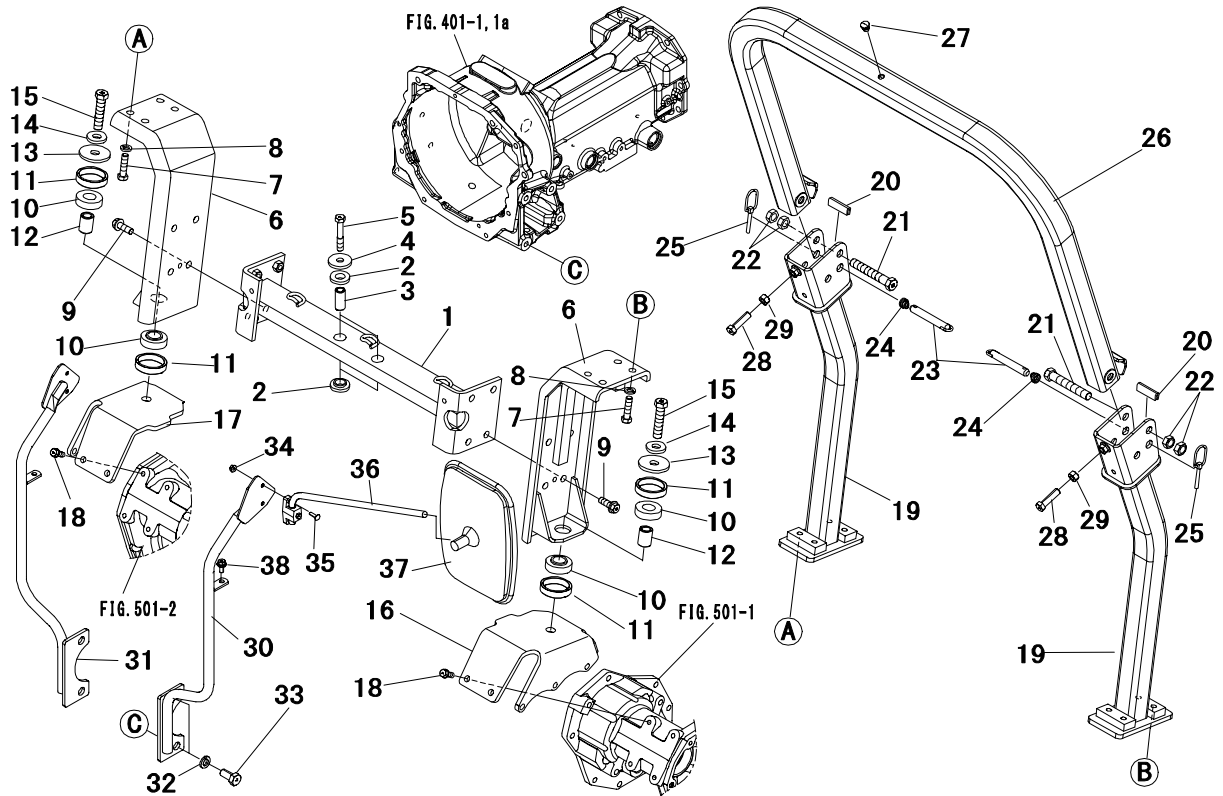
FIG. 304 FENDER & STEP



A	GEAR
B	HST

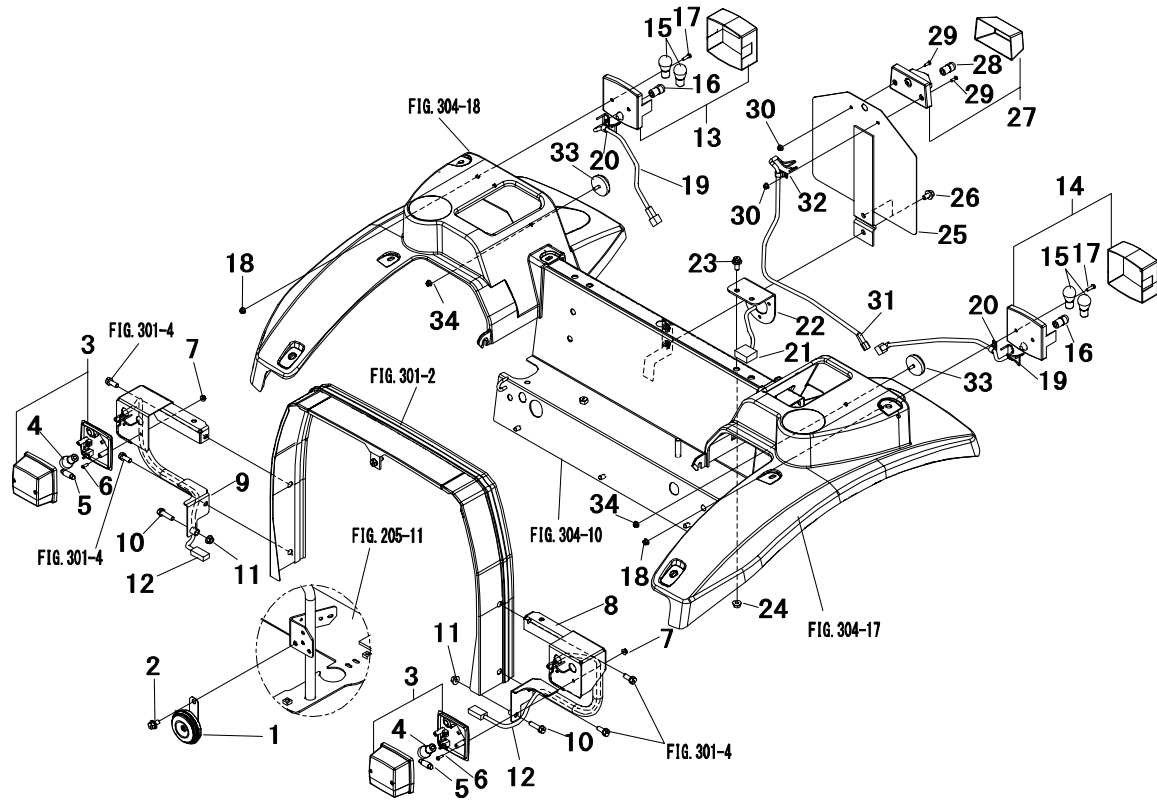
Key No.	Parts No.	Parts Name.	Q'ty				R/P	Application	Description	Remarks
			A	B						
1	1044 3502 AE0	FENDER LH	1	1						
2	1044 3504 AE0	FENDER RH	1	1						
3	F945 0112 035	BOLT	4	4				M12 × 35		
4	1038 3509 000	GRIP,assist	2	2						
5	F300 0106 001	NUT,flange	4	4				M6		
6	A252 0706 020	SCREW	2	2				M6 × 20		
7	0350 0150 622	WASHER	4	4				M6		
8	H184 0108 020	BOLT,w/washer	2	2				M8 × 20		
9	1945 6311 AE1	COVER,front	1	.						
9a	1945 6313 AE1	COVER,front	.	1						
10	1945 6315 AE0	COVER,rear	1	1						
11	A301 0108 002	NUT	2	2				M8		
12	F301 0108 000	NUT,flange	3	3				M8		
13	H154 0108 025	BOLT,w/washer	2	2				M8 × 25		
14	H154 0108 030	BOLT,w/washer	2	2				M8 × 30		
15	H154 0108 016	BOLT,w/washer	8	8				M8 × 16		
16	H154 0108 016	BOLT,w/washer	2	2				M8 × 16		
17	1945 6306 000	COVER LH,fender	1	1						
18	1945 6307 000	COVER RH,fender	1	1						
19	H194 0106 020	BOLT,w/washer	2	2				M6 × 20		
20	1945 6325 AE1	STEP LH	1	1						
21	1957 3541 000	BOLT	2	2						
22	1031 1826 000	RUBBER	3	3						
23	1945 6326 AE1	STEP RH	1	.						
23a	1945 6327 AE1	STEP RH	.	1						
24	1193 0439 000	GROMMET	6	6						
25	1038 2241 000	COLLAR	6	6						
26	H154 0108 025	BOLT,w/washer	2	2				M8 × 25		
27	F301 0108 000	NUT,flange	6	6				M8		
28	1044 3529 000	RUBBER	2	2						
29	1044 3531 AG0	STEP,sub	2	2						
30	H154 0108 020	BOLT,w/washer	8	8				M8 × 20		
31	F301 0108 000	NUT,flange	4	4				M8		
32	0040 1001 601	GROMMET	1	1				φ 16		
33	H154 0108 020	BOLT,w/washer	2	2				M8 × 20		

FIG. 307 SAFETY FRAME (REAR)



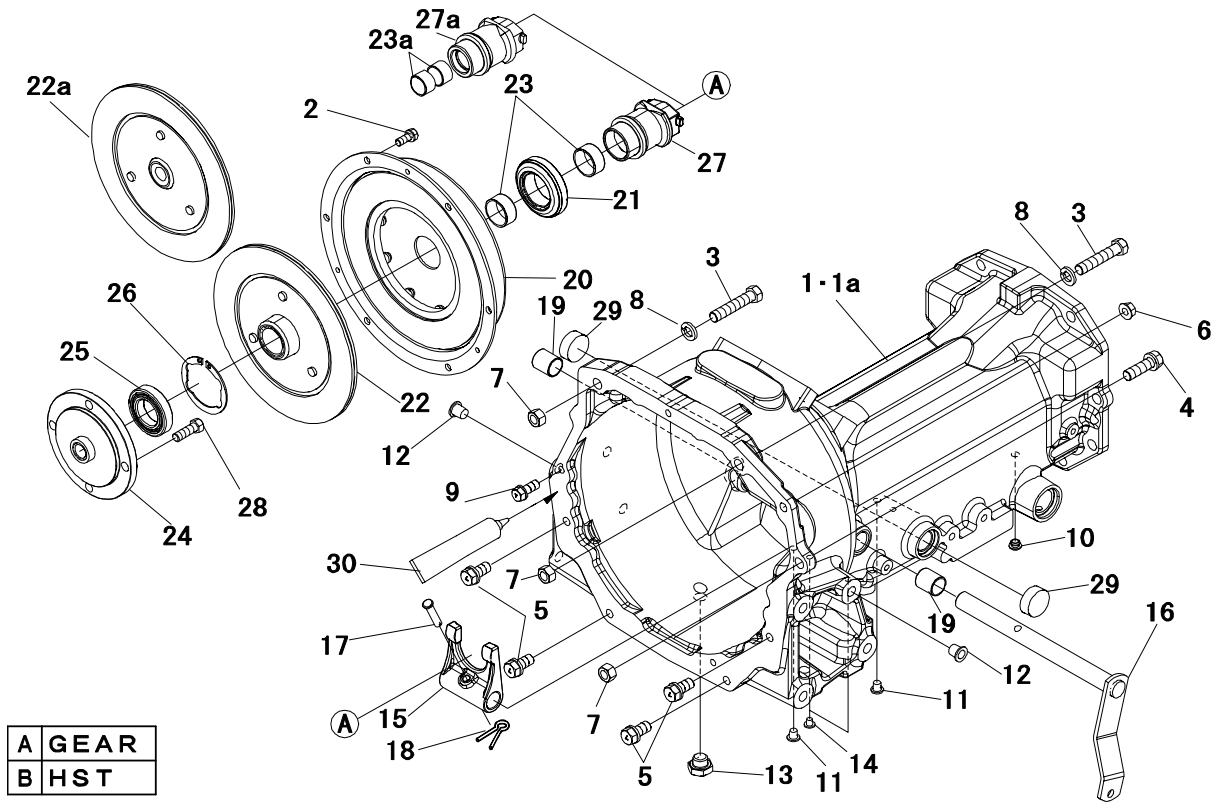
Key No.	Parts No.	Parts Name.	Q'ty				R/P	Application	Description	Remarks
			ALL							
1	1945 6511 AG0	SUPPORT,bracket	1							
2	1038 3932 000	RUBBER CUSHION	4							
3	1957 3915 000	COLLAR	2							
4	3515 0657 200	WASHER	2							
5	A054 0112 070	BOLT 7T	2					M12 × 70		
6	1945 6513 AE0	FRAME	2							
7	A945 0112 045	BOLT 10.9	8					M12 × 45		
8	A360 0101 202	WASHER,spring	8					M12		
9	F945 0112 035	BOLT	4					M12 × 35		
10	1038 3946 000	RUBBER,cushion	4							
11	1038 3943 000	COLLAR	4							
12	1963 3915 000	COLLAR	2							
13	1038 3944 000	WASHER	2							
14	1044 3926 000	WASHER	2							
15	A945 0116 070	BOLT 10.9	2					M16 × 70		
16	1945 6517 AG0	BRACKET LH,rear	1							
17	1945 6518 AG0	BRACKET RH,rear	1							
18	F154 0110 025	BOLT,w/washer	4					M10 × 25		
19	1945 6531 AG0	BRACKET,rollbar	2							
20	3555 2625 000	BAND,rubber	2							
21	A945 0116 100	BOLT	2					M16 × 100		
22	A083 0116 001	NUT	4					M16		
23	1945 6525 000	PIN	2							
24	1035 3931 000	SPRING	2							
25	1904 3905 000	PIN,linch	2							
26	1945 6535 AG0	ROLLBAR	1							
27	1176 3534 001	PLUG,mat	1							
28	A050 0112 045	BOLT 7T	2					M12 × 45		
29	A301 0112 002	NUT	2					M12		
30	1945 6571 000	BRACKET,mirr lh	1							
31	1945 6576 000	BRACKET MIRR RH	1							
32	A360 0101 402	WASHER,spring	2					M14		
33	A040 0114 030	BOLT 7T	2					M14 × 30		
34	F300 0106 000	NUT,flange	2					M6		
35	A222 0106 020	SCREW	2					M6 × 20		

FIG. 310 SAFETY DEVICE



Key No.	Parts No.	Parts Name.	Q'ty				R/P	Application	Description	Remarks
			ALL							
1,2	1945 3501 000	HORN ASSY	1							
1	1048 3502 000	HORN	1							
2	H154 0108 016	BOLT,w/washer	1					M8 × 16		
3~12	1945 3510 000	COMBI LAMP ASSY	1							
3	1215 0104 100	LAMP	2							
4	1215 0104 200	BULB	2					12V21W		
5	1215 0104 300	BULB	2					12V5W		
6	A242 0104 012	SCREW	4					M4 × 12		
7	F300 0104 000	NUT,flange	4					M4		
8	1945 3511 AG0	LAMP BRACKET LH	1							
9	1945 3512 AG0	LAMP BRACKET RH	1							
10	F154 0108 030	BOLT,w/washer	2					M8 × 30		
11	F301 0108 000	NUT,flange	2					M8		
12	1945 3513 000	LEAD WIRE F	2							
13~20	1945 3515 000	COMBI LAMP ASSY	1							
13	1215 0105 100	LAMP	1							
14	1215 0106 100	LAMP	1							
15	1215 0104 200	BULB	4					12V21W		
16	1215 0105 300	BULB	2					12V10W		
17	A242 0105 016	SCREW	4					M5 × 16		
18	F300 0105 000	NUT,flange	4					M5		
19	1945 3516 000	LEAD WIRE R	2							
20	1044 2993 000	CLIP	2							
21~24	1945 3520 000	7P ASSY	1							
21	1942 2919 000	HARNESS 7P	1							
22	1945 3522 AE0	PLATE 7P	1							
23	H154 0108 020	BOLT,w/washer	2					M8 × 20		
24	F301 0108 000	NUT,flange	2					M8		
25~32	1945 3525 000	REGIST ASSY	1							
25	1942 3421 AE0	PLATE,regist	1							
26	H154 0108 016	BOLT,w/washer	2					M8 × 16		
27	1215 0107 100	LAMP	1							
28	1215 0105 300	BLUB	1					12V10W		
29	A242 0104 012	SCREW	2					M4 × 12		
30	F300 0104 000	NUT,flange	2					M4		

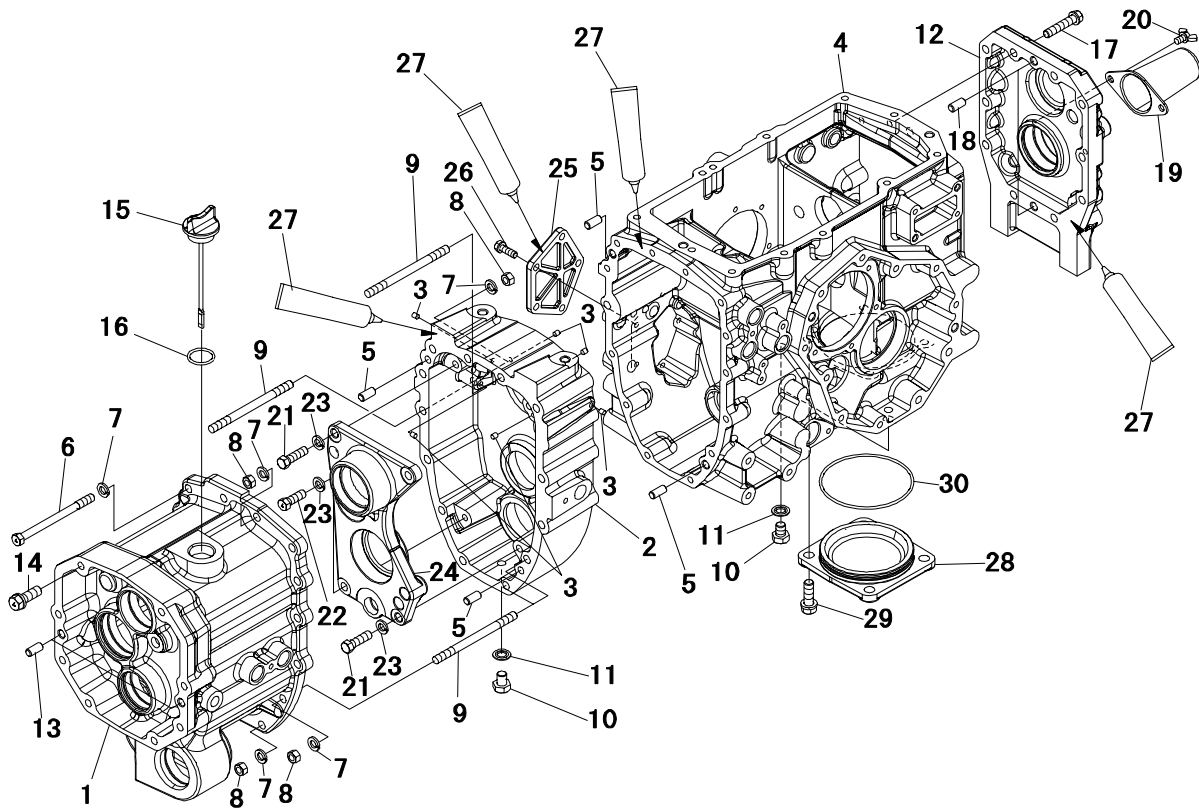
FIG. 401 MAIN CLUTCH



A	GEAR
B	HST

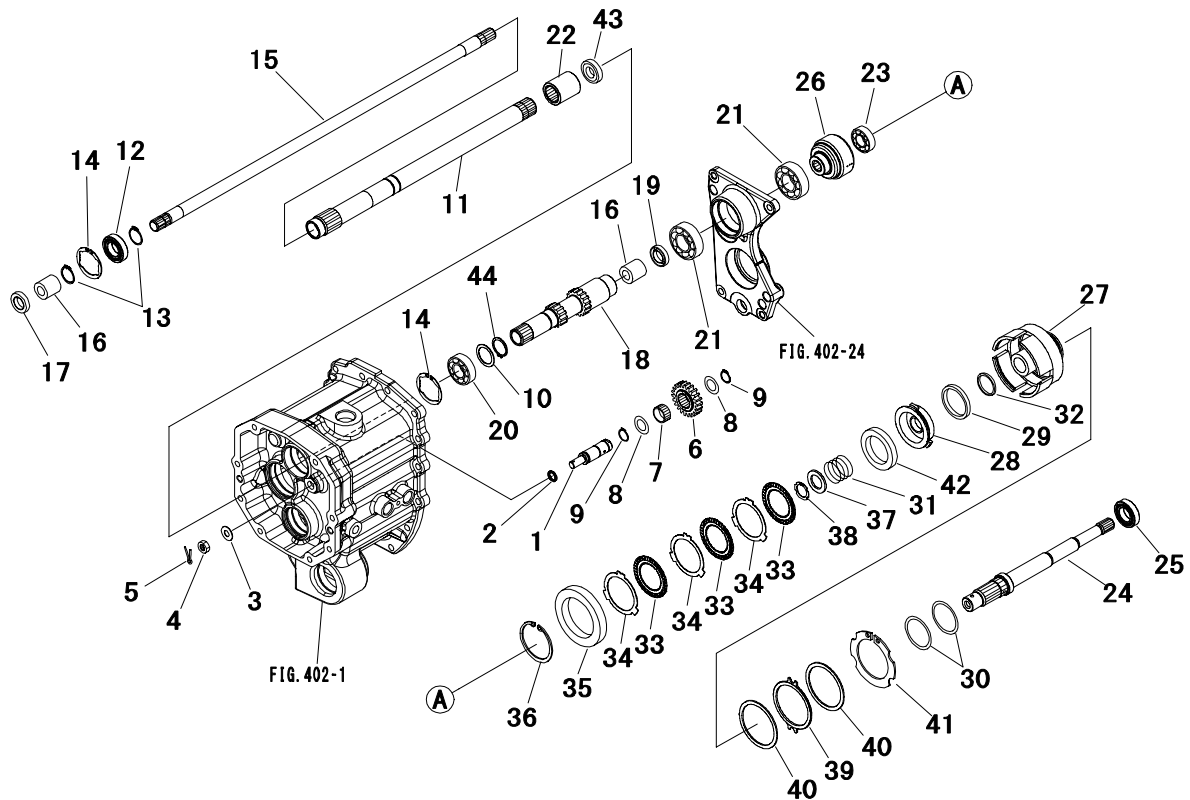
Key No.	Parts No.	Parts Name.	Q'ty				R/P	Application	Description	Remarks
			A	B						
1	1945 1321 AG0	HOUSING CLUTCH	1	.						
1a	1945 1322 AG0	HOUSING CLUTCH	.	1						
2	F154 0108 020	BOLT,w/washer	6	6				M8 × 20		
3	A055 0112 060	BOLT 7T	2	2				M12 × 60		
4	F155 0112 040	BOLT,w/washer	1	1				M12 × 40		
5	F154 0112 025	BOLT,w/washer	4	4				M12 × 25		
6	F303 0110 001	NUT,flange	1	1				M10		
7	A303 0112 002	NUT	3	3				M12		
8	A360 0101 202	WASHER,spring	2	2				M12		
9	F154 0110 025	BOLT,w/washer	1	1				M10 × 25		
10	2761 3733 000	CAP	1	1						
11	05534-10000	PLUG	2	2						
12	05534-14000	PLUG	8	8						
13	F5000-16000	PLUG	1	1						
14	05534-08000	PLUG	2	2						
15	1176 1014 001	LEVER,clutch	1	1						
16	1038 1011 AG0	SHAFT RELEASE	1	1						
17	F2855-08040	PIN,clevis	1	1				φ 8 × 40		
18	0520 0120 020	PIN,split	1	1				φ 2 × 20		
19	0796 1020 250	BUSHING	2	2						
20	1028 1111 000	COVER ASSY	1	1						
21	1176 1015 000	BEARING	1	1						
22	1957 1111 000	DISK,clutch	1	.						
22a	1964 1112 000	DISC,clutch	.	1						
23	1406 1178 000	BUSHING	2	.						
23a	0797 2022 150	BUSHING	.	2						
24	1945 1363 000	COUPLING	1	.						
25	1957 1051 000	BEARING	1	.						
26	0741 0005 801	C-RING	1	.				φ 58		
27	1957 1011 000	HUB,release	1	.						
27a	1956 1011 000	HUB,release	.	1						
28	A050 0110 030	BOLT 7T	4	.				M10 × 30		
29	0834 0032 070	SEAL CAP	.	2						
30	TB1206D	GASKET	AR	AR						

FIG. 402 TRANSMISSION (GEAR) (1/8)



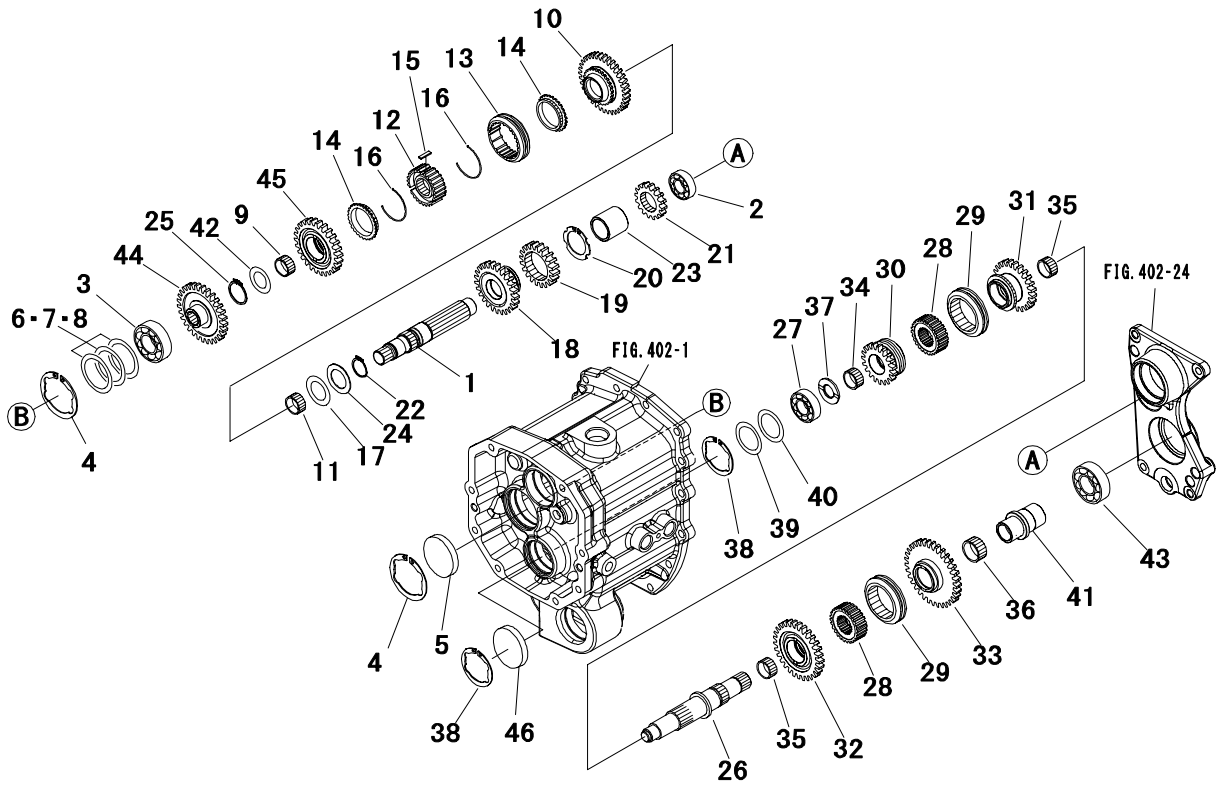
Key No.	Parts No.	Parts Name.	Q'ty				R/P	Application	Description	Remarks
			ALL							
1	1945 1401 AG0	HOUSING,transmi	1							
2,3	1957 1210 000	HOLDER,bearing	1							
2	*	HOLDER BEARING	1							
3	*	PLUG	6							
4	1944 1203 AG2	HOUSING,diff	1							
5	0540 1010 020	PIN,dowel	4					φ 10 × 20		
6	A054 0110 125	BOLT	10					M10 × 125		
7	A360 0101 002	WASHER,spring	14					M10		
8	A301 0110 002	NUT	4					M10		
9	1044 1595 000	STUD	4							
10	1025 0808 000	PLUG	3							
11	0833 1001 200	WASHER,seal	3					M12		
12	1957 1205 AG0	COVER PTO	1							
13	0540 1010 020	PIN,dowel	2					φ 10 × 20		
14	F154 0112 035	BOLT,w/washer	8					M12 × 35		
15	1981 2472 002	PLUG,oiling	1							
16	0830 0100 280	O-RING	1					φ 28		
17	F154 0110 050	BOLT,w/washer	10					M10 × 50		
18	0540 1010 020	PIN,dowel	2					φ 10 × 20		
19	1031 1382 000	CAP P.T.O	1							
20	A140 0600 812	BOLT,wing	2					M8 × 12		
21	1040 1337 000	BOLT	2							
22	A050 0110 030	BOLT 7T	2					M10 × 30		
23	A360 0101 002	WASHER,spring	4					M10		
24	1957 1204 001	COVER	1							
25	1044 1207 AG0	COVER	1							
26	F154 0108 025	BOLT,w/washer	5					M8 × 25		
27	TB1206D	GASKET	AR							
28	1957 1602 AG0	COVER	1							
29	F154 0112 035	BOLT,w/washer	2					M12 × 35		
30	0830 0201 100	O-RING	1					φ 110		

FIG. 403 TRANSMISSION (GEAR) (2/8)



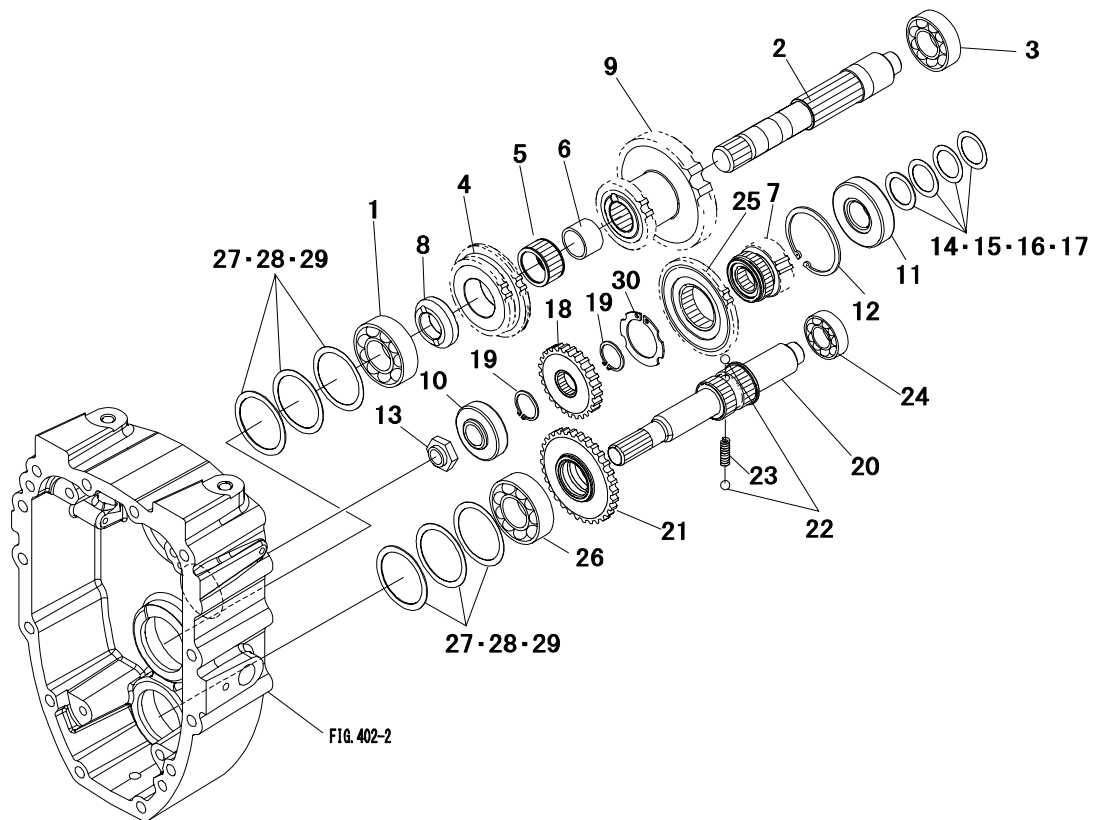
Key No.	Parts No.	Parts Name.	Q'ty				R/P	Application	Description	Remarks
			ALL							
1	1044 1215 000	SHAFT,back idle	1							
2	0830 0100 160	O-RING	1					φ 16		
3	0350 0151 226	WASHER	1					M12		
4	A310 0101 201	NUT	1							
5	0520 0125 020	PIN,split	1					φ 2.5 × 20		
6	1044 1216 001	GEAR 22T	1					22T		
7	0780 2202 617	BEARING,needle	1							
8	1352 1406 000	LINER B,thrust	2							
9	0740 0002 000	C-RING	2					φ 20		
10	3521 1303 200	LINER	1							
11	1957 1277 000	SHAFT,pipe	1							
12	0750 0560 064	BEARING,ball	1					6006DD		
13	0740 0003 000	C-RING	2					φ 30		
14	0741 0005 501	C-RING	2					φ 55		
15	1957 1278 000	SHAFT,drive	1							
16	0796 3020 200	BUSHING	2							
17	1963 1276 000	SEAL,oil	1							
18	1945 1481 000	SHAFT,shuttle	1							
19	0840 1020 307	SEAL,oil	1					TC20307		
20	0750 0060 060	BEARING,ball	1					6006		
21	0750 0060 070	BEARING,ball	2					6007		
22	1957 1279 000	BOSS,spline	1							
23	0750 0060 050	BEARING,ball	1					6005		
24	1957 1285 000	SHAFT	1							
25	0750 0560 054	BEARING,ball	1					6005DD		
26	1957 1283 000	BOSS,spline	1							
27~42	1957 1291 001	PTO CLUTCH ASSY	1							
27	1957 1291 111	CASE	1							
28	1957 1291 120	PISTON	1							
29	1961 1261 130	RING,seal	1							
30	1961 1261 140	RING,seal	2							
31	1961 1261 150	SPRING	1							
32	1961 1261 160	RING,seal	1							
33	1957 1291 170	PLATE,drive	3							
34	1961 1261 180	PLATE,disk	3							

FIG. 404 TRANSMISSION (GEAR) (3/8)



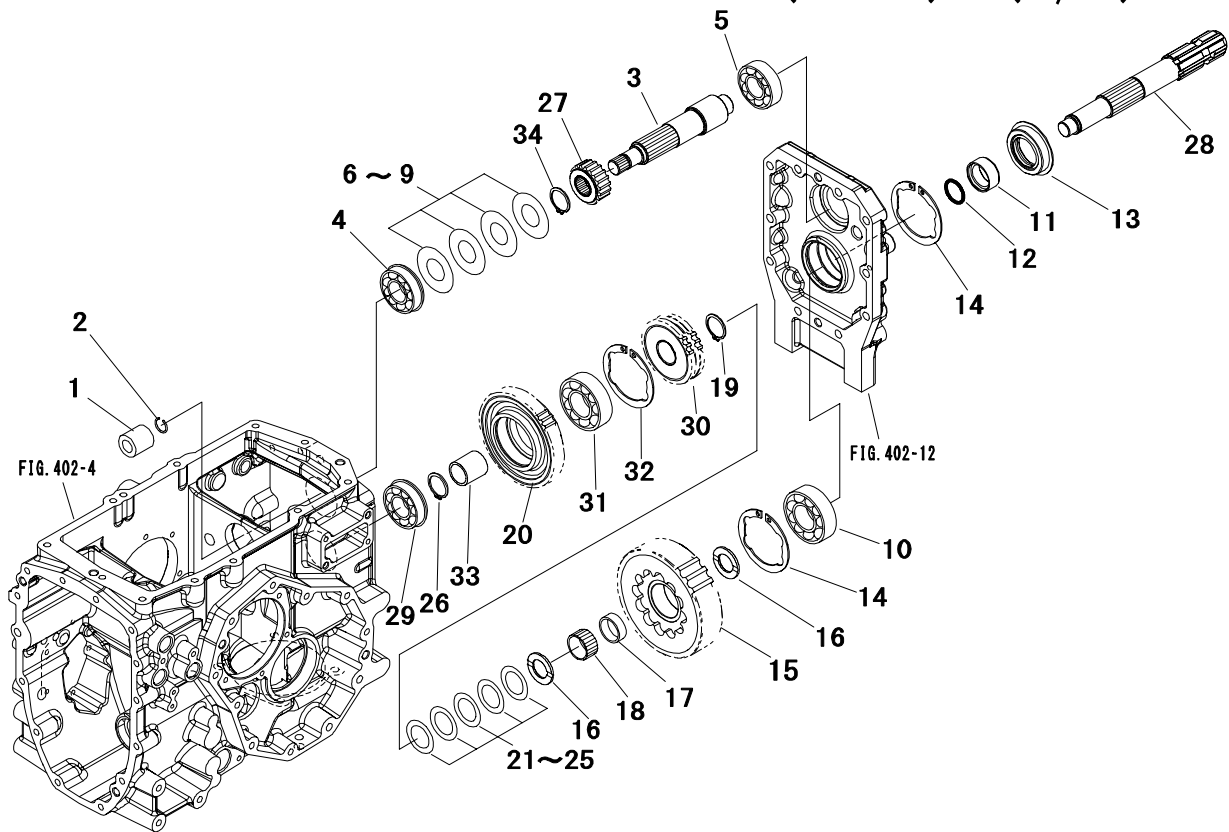
Key No.	Parts No.	Parts Name.	Q`ty				R/P	Application	Description	Remarks
			ALL							
1	1945 1417 000	SHAFT	1							
2	0752 0662 050	BEARING,ball	1					6205RSH2		
3	0751 0662 060	BEARING	1							
4	0741 0006 201	C-RING	2					φ 62		
5	0834 0062 100	CAP,seal	1					φ 62		
6~8	1021 1318 000	LINER SET	AR							
6	0730 0006 202	LINER	AR					t=0.2		
7	0730 0006 206	LINER	AR					t=0.6		
8	0730 0006 210	LINER	AR					t=1.0		
9	0780 2253 117	BEARING,needle	1							
10	1945 1496 000	GEAR 34T	1					34T		
11	0780 2303 517	BEARING,needle	1							
12	1956 1208 000	HUB,synchronize	1							
13	1956 1209 000	SLEEVE,synchron	1							
14	1956 1215 000	RING,synchroniz	2							
15	1956 1216 000	KEY,synchronize	3							
16	1956 1217 000	SPRING,synchron	2							
17	1044 1235 000	LINER	AR					t=1.0		
18	1945 1428 000	GEAR 25T	1					25T		
19	1044 1229 000	GEAR 20T	1					20T		
20	0740 0004 501	C-RING	1					φ 45		
21	1945 1427 000	GEAR 16T	1					16T		
22	0740 0003 000	C-RING	1					φ 30		
23	1044 1239 000	COLLAR	1							
24	1051 1403 000	LINER	AR					t=1.2		
25	0740 0002 500	C-RING	1					φ 25		
26	1044 1241 000	SHAFT,main	1							
27	0750 0063 040	BEARING,ball	1					6304		
28	1035 1289 001	HUB	2							
29	1044 1209 000	SLEEVE	2							
30	1044 1244 000	GEAR 19T	1					19T		
31	1945 1447 000	GEAR 24T	1					24T		
32	1945 1448 000	GEAR 29T	1					29T		
33	1945 1429 000	GEAR 33T	1					33T		
34	0780 2253 117	BEARING,needle	1							

FIG. 405 TRANSMISSION (GEAR) (4/8)



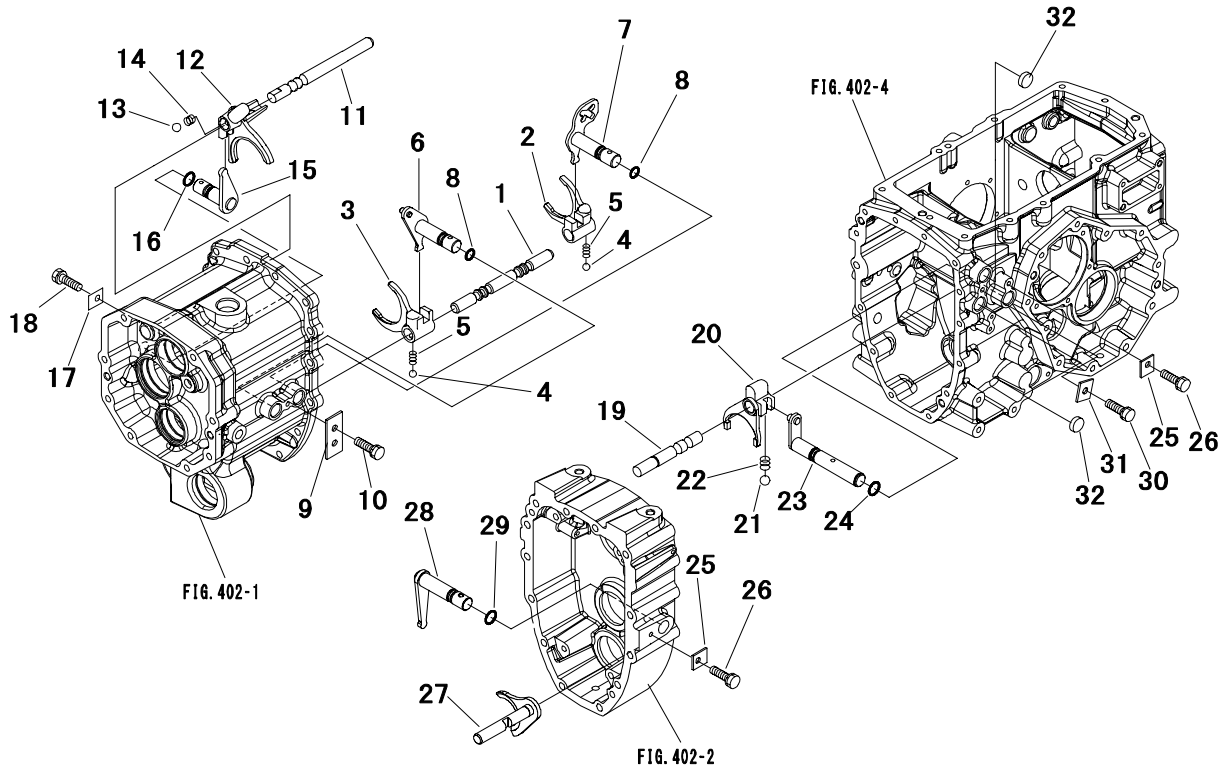
Key No.	Parts No.	Parts Name.	Q'ty				R/P	Application	Description	Remarks
			ALL							
1	0750 0063 050	BEARING,ball	1					6305		
2	1957 1236 000	SHAFT,sub	1							
3	0750 0063 040	BEARING,ball	1					6304		
4	1957 1231 000	GEAR 28-33T	1					28-33T		
5	0780 2303 720	BEARING,needle	1							
6	1041 1291 000	COLLAR	1							
7	1957 1238 000	GEAR 14T	1					14T		
8	1044 1259 001	COLLAR	1							
9	1945 1437 000	GEAR 35-19T	1					35-19T		
10	0770 0030 304	BEARING,taper	1					30304		
11	0770 0130 305	BEARING,taper	1					30305		
12	0741 0006 200	C-RING	1					φ 62		
13	1044 1226 001	NUT	1							
14~17	1021 2158 000	SHIM SET	AR							
14	0731 0002 501	LINER	AR					t=0.15		
15	0731 0002 502	LINER	AR					t=0.2		
16	0731 0002 504	LINER	AR					t=0.4		
17	0731 0002 508	LINER	AR					t=0.8		
18	1957 1242 000	GEAR 25T	1					25T		
19	0740 0002 500	C-RING	2					φ 25		
20	1945 1472 000	SHAFT,4wd	1							
21	1957 1274 000	GEAR 35T	1					35T		
22	0800 0000 800	BALL	2					5/16"		
23	1035 1293 000	SPRING	1							
24	0750 0060 040	BEARING,ball	1					6004		
25	1957 1239 000	GEAR 28T	1					28T		
26	0750 0063 050	BEARING,ball	1					6305		
27~29	1021 1318 000	LINER SET	AR							
27	0730 0006 202	LINER	AR					t=0.2		
28	0730 0006 206	LINER	AR					t=0.6		
29	0730 0006 210	LINER	AR					t=1.0		
30	0740 0004 201	C-RING	1					φ 42		

FIG. 406 TRANSMISSION (GEAR) (5/8)



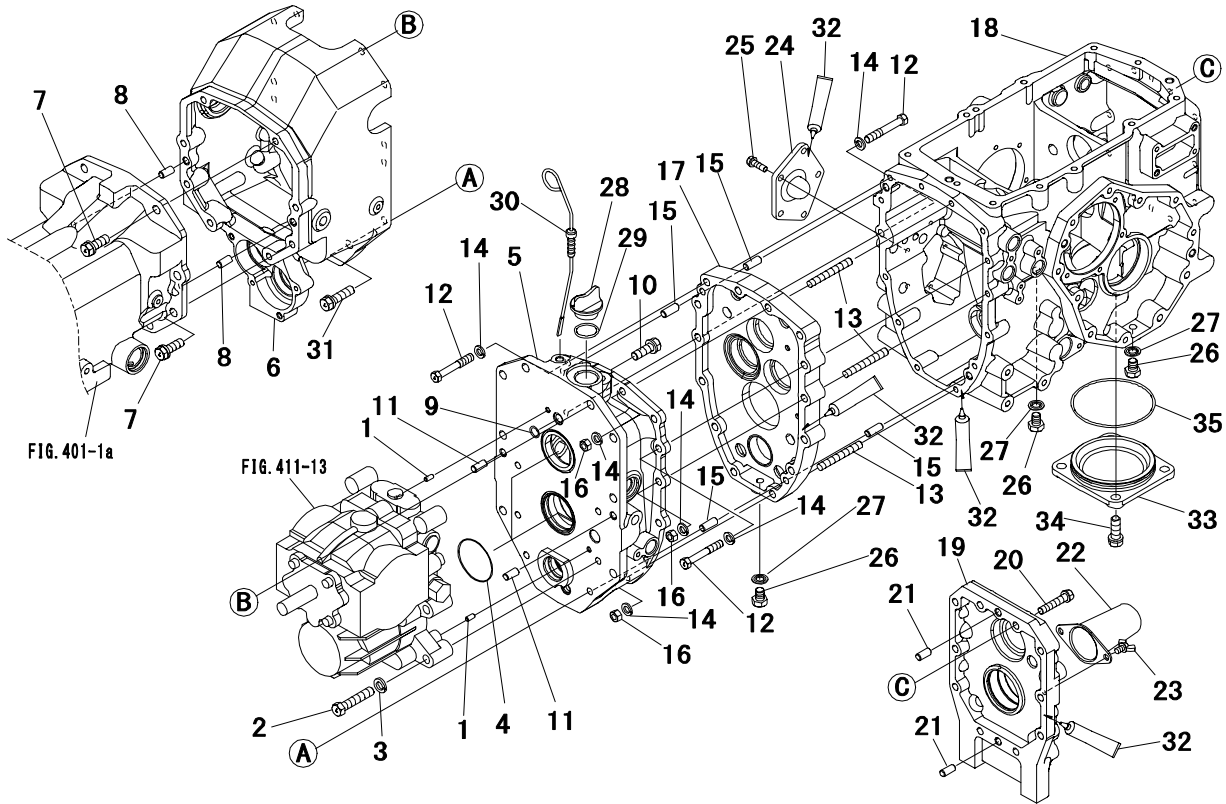
Key No.	Parts No.	Parts Name.	Q` ty				R/P	Application	Description	Remarks
			ALL							
1	1957 1216 000	BOSS,spline	1							
2	1031 1363 001	RING	1							
3	1945 1465 000	SHAFT,pto drive	1							
4	0750 0063 045	BEARING,ball	1					6304		
5	0752 0663 050	BEARING,ball	1					6305		
6~9	1957 1261 000	LINER SET	AR							
6	0731 0002 001	LINER	AR					t=0.15		
7	0731 0002 002	LINER	AR					t=0.2		
8	0731 0002 004	LINER	AR					t=0.4		
9	0731 0002 010	LINER	AR					t=1.0		
10	0750 0062 060	BEARING,ball	1					6206		
11	1025 1405 000	BUSHING	1							
12	0830 0100 300	O-RING	1					φ 30		
13	1021 1314 000	SEAL,oil	1							
14	0741 0006 201	C-RING	2					φ 62		
15	1945 1467 000	GEAR 44T	1					44T		
16	1041 1237 000	LINER	2							
17	3559 6104 100	SLEEVE	1							
18	0780 2354 220	BEARING,needle	1							
19	0740 0003 000	C-RING	1					φ 30		
20	1945 1469 000	GEAR 46T	1					46T		
21~25	1019 0625 000	LINER SET	AR							
21	0731 0003 001	LINER	AR					t=0.15		
22	0731 0003 002	LINER	AR					t=0.2		
23	0731 0003 004	LINER	AR					t=0.4		
24	0731 0003 008	LINER	AR					t=0.8		
25	0731 0003 010	LINER	AR					t=1.0		
26	0740 0002 500	C-RING	1					φ 25		
27	1945 1466 000	GEAR 19T	1					19T		
28	1957 1254 000	SHAFT,pto	1							
29	0750 0063 045	BEARING,ball	1					6304		
30	1945 1468 000	GEAR 24T	1					24T		
31	0752 0663 050	BEARING,ball	1					6305		
32	0741 0006 201	C-RING	1					φ 62		
33	1957 1253 000	COLLAR	1							

FIG. 408 TRANSMISSION (GEAR) (7/8)



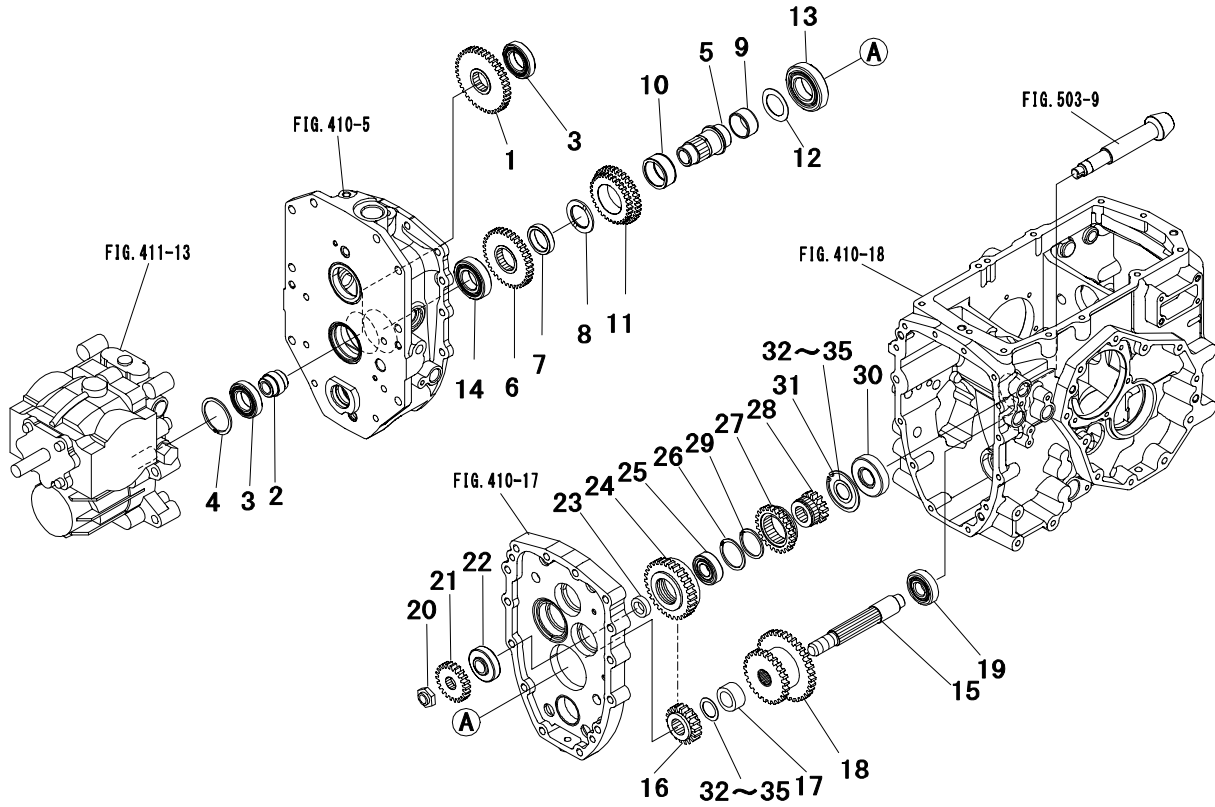
Key No.	Parts No.	Parts Name.	Q'ty				R/P	Application	Description	Remarks
			ALL							
1	1044 1701 000	RAIL,main	1							
2	1044 1702 000	FORK 1-2,main	1							
3	1044 1703 000	FORK 3-4,main	1							
4	0800 0000 900	BALL	2					11/32"		
5	67428-01700	SPRING	2							
6	1044 1704 000	SHIFTER A,main	1							
7	1044 1705 000	SHIFTER B,main	1							
8	0830 0100 160	O-RING	2					φ 16		
9	1958 1704 000	PLATE	1							
10	F154 0108 020	BOLT,w/washer	1					M8 × 20		
11	1957 1708 000	RAIL,shuttle	1							
12	1044 1709 000	FORK A,shuttle	1							
13	0800 0000 900	BALL	1					11/32"		
14	1030 1791 000	SPRING	1							
15	1044 1712 000	SHIFTER,shuttle	1							
16	0830 0100 160	O-RING	1					φ 16		
17	1025 1304 000	PLATE	1							
18	F154 0108 020	BOLT,w/washer	1					M8 × 20		
19	1957 1716 000	RAIL,sub	1							
20	1044 1718 001	FORK,sub	1							
21	0800 0000 900	BALL	1					11/32"		
22	1037 1764 001	SPRING	1							
23	1957 1719 000	SHIFTER,sub	1							
24	0830 0100 160	O-RING	1					φ 16		
25	1025 1304 000	PLATE	2							
26	F154 0108 020	BOLT,w/washer	2					M8 × 20		
27	1957 1721 000	FORK,4wd	1							
28	1957 1722 000	SHIFTER,4wd	1							
29	0830 0100 160	O-RING	1					φ 16		
30	F154 0108 020	BOLT,w/washer	1					M8 × 20		
31	1025 1304 000	PLATE	1							
32	0834 0020 070	CAP,seal	2					φ 20		

FIG. 410 TRANSMISSION (HST) (1/7)



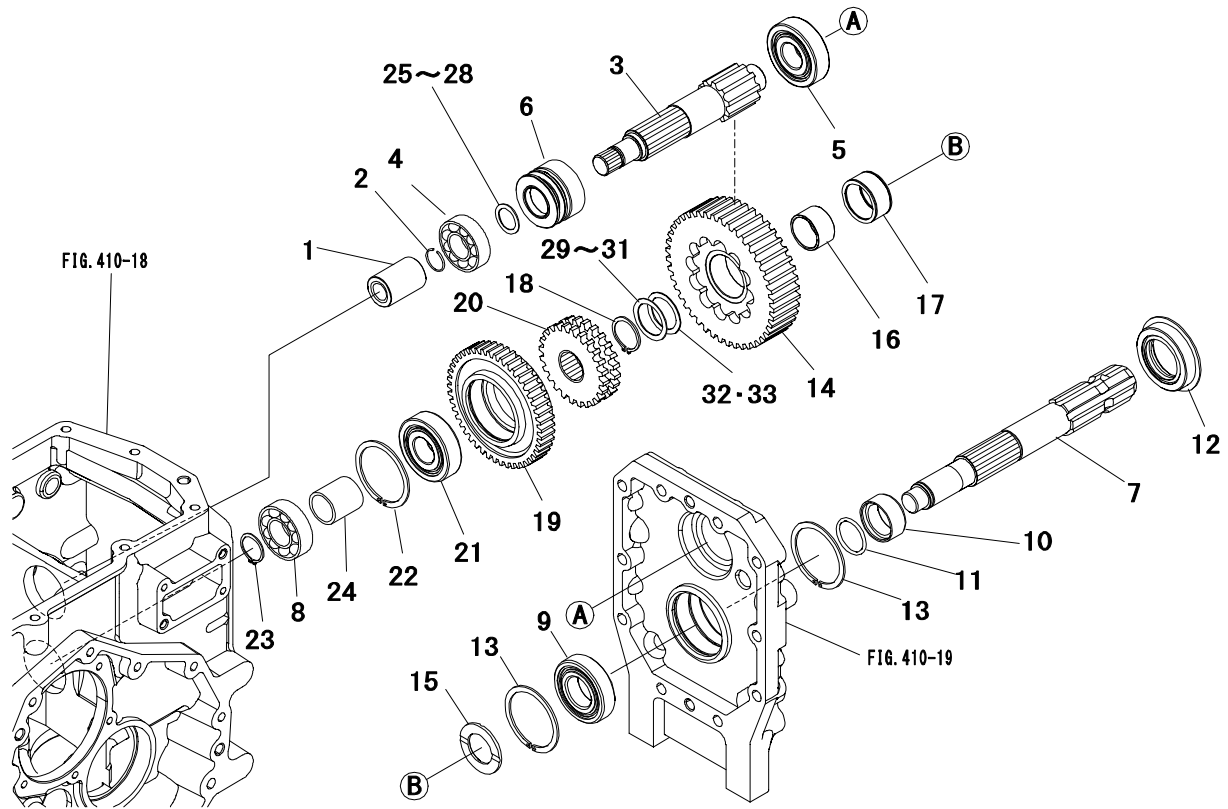
Key No.	Parts No.	Parts Name.	Q'ty				R/P	Application	Description	Remarks
			ALL							
1	0540 1006 012	PIN,dowel	2					$\phi 6 \times 12$		
2	A054 0112 060	BOLT 7T	4					M12 \times 60		
3	A360 0101 202	WASHER,spring	4					M12		
4	0830 0500 630	O-RING	2					$\phi 63$		
5	1945 1702 AG0	CASE,center	1							
6	1945 1704 AG0	CASE,hst	1							
7	F154 0112 035	BOLT,w/washer	8					M12 \times 35		
8	0540 1010 020	PIN,dowel	2					$\phi 10 \times 20$		
9	0830 1100 140	O-RING	1					$\phi 14$		
10	F154 0112 035	BOLT,w/washer	8					M12 \times 35		
11	0540 1010 020	PIN,dowel	2					$\phi 10 \times 20$		
12	A054 0110 065	BOLT 7T	9					M10 \times 65		
13	A063 0110 060	STUD	5							
14	A360 0101 002	WASHER,spring	14					M10		
15	0540 1010 025	PIN,dowel	4					$\phi 10 \times 25$		
16	A301 0110 002	NUT	5					M10		
17	1957 1306 AG3	HOLDER,bearing	1							
18	1944 1203 AG2	HOUSING,diff	1							
19	1957 1205 AG0	COVER,pto	1							
20	F154 0110 050	BOLT,w/washer	10					M10 \times 50		
21	0540 1010 020	PIN,dowel	2					$\phi 10 \times 20$		
22	1031 1382 000	CAP,pto	1							
23	A140 0600 812	BOLT,wing	2					M8 \times 12		
24	1957 1307 AG0	COVER	1							
25	F154 0108 025	BOLT,w/washer	5					M8 \times 25		
26	1025 0808 000	PLUG	3							
27	0833 1001 200	WASHER,seal	3					M12		
28	67472-10601	PLUG,oil	1							
29	0830 0100 280	O-RING	1					$\phi 28$		
30	1957 1329 000	GAGE,oil	1							
31	F154 0112 045	BOLT,w/washer	3					M12 \times 45		
32	TB1206D	GASKET	AR							
33	1957 1602 AG0	COVER	1							
34	F154 0112 035	BOLT,w/washer	2					M12 \times 35		
35	0830 0201 100	O-RING	1					$\phi 110$		

FIG. 412 TRANSMISSION (HST) (3/7)



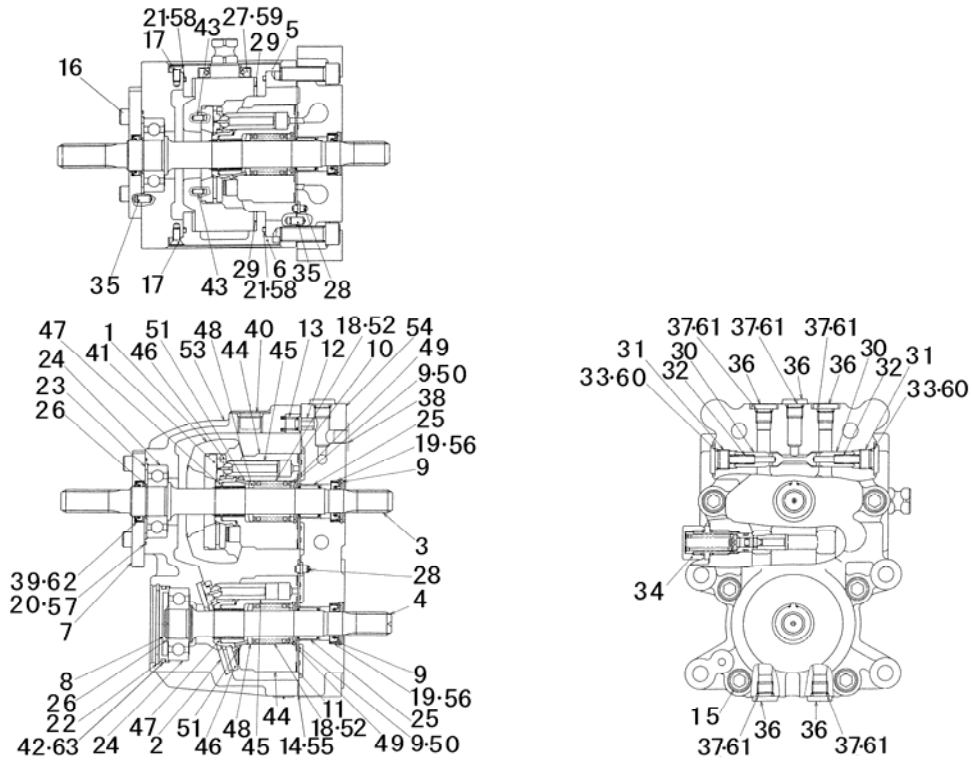
Key No.	Parts No.	Parts Name.	Q'ty				R/P	Application	Description	Remarks
			ALL							
1	1957 1311 000	GEAR 40T	1					40T		
2	1957 1312 000	BOSS,spline	1							
3	0750 0060 060	BEARING,ball	2					6006		
4	0741 0005 501	C-RING	1					φ 55		
5	1957 1317 000	SHAFT	1							
6	1957 1318 000	GEAR 36T	1					36T		
7	1957 1316 000	COLLAR	1							
8	1961 1314 000	LINER	1							
9	1041 1316 000	COLLAR	1							
10	0780 2404 820	BEARING,needle	1							
11	1945 1745 000	GEAR 31-35T	1					31-35T		
12	1039 1258 000	LINER	1							
13	0750 0062 070	BEARING,ball	1					6207		
14	0750 0062 060	BEARING,ball	1					6206		
15	1957 1321 000	SHAFT,sub	1							
16	1957 1322 000	GEAR 18T	1					18T		
17	1044 1298 001	COLLAR	1							
18	1945 1742 000	GEAR 25-35T	1					25-35T		
19	0750 0063 040	BEARING,ball	1					6304		
20	1044 1226 001	NUT	1							
21	1957 1331 000	GEAR 22T	1					22T		
22	0770 1130 304	BEARING,taper	1					30304		
23	1957 1334 000	COLLAR	1							
24	1957 1335 000	GEAR 30T	1					30T		
25	0752 0662 040	BEARING,ball	1					6204		
26	0741 0004 701	C-RING	1					φ 47		
27	1957 1332 000	GEAR 23T	1					23T		
28	1957 1333 000	GEAR 14T	1					14T		
29	0740 0004 201	C-RING	1					φ 42		
30	0770 0130 305	BEARING,taper	1					30305		
31	0741 0006 200	C-RING	1					φ 62		
32~35	1021 2158 000	SHIM SET	AR							
32	0731 0002 501	LINER	AR					t=0.15		
33	0731 0002 502	LINER	AR					t=0.2		
34	0731 0002 504	LINER	AR					t=0.4		

FIG. 414 TRANSMISSION (HST) (5/7)



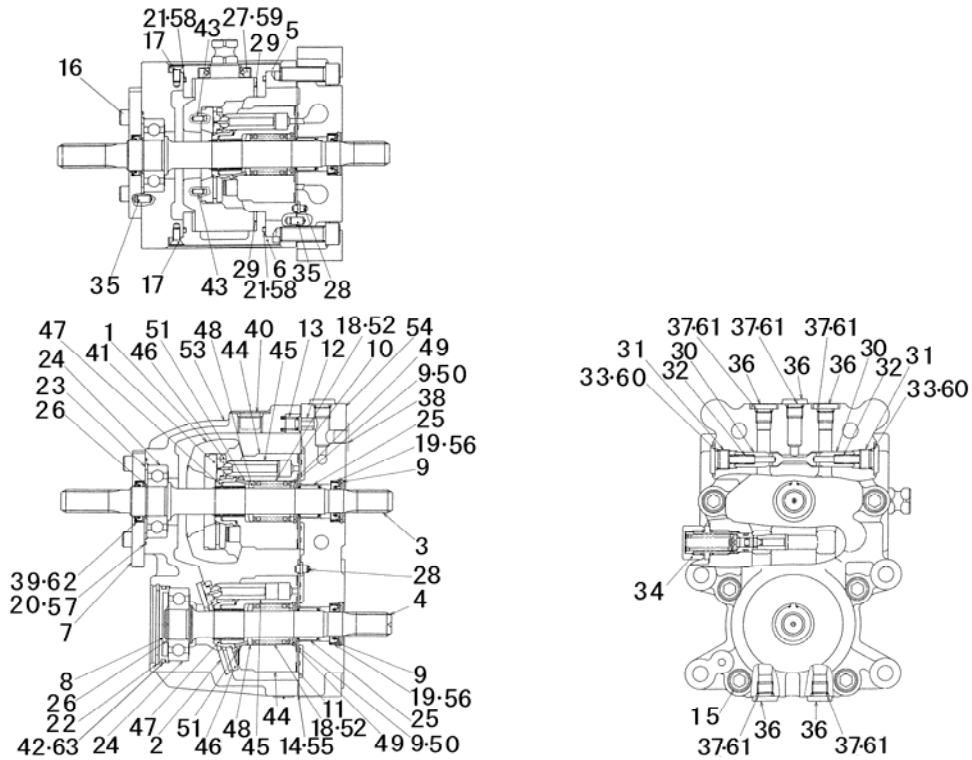
Key No.	Parts No.	Parts Name.	Q'ty				R/P	Application	Description	Remarks
			ALL							
1	1957 1216 000	BOSS,spline	1							
2	1031 1363 001	RING	1							
3	1957 1247 000	SHAFT,pto drive	1							
4	0750 0063 045	BEARING,ball	1					6304		
5	0752 0663 050	BEARING,ball	1					6305		
6	1957 1248 000	GEAR 19T	1					19T		
7	1957 1254 000	SHAFT,pto	1							
8	0750 0063 045	BEARING,ball	1					6304		
9	0750 0062 060	BEARING,ball	1					6206		
10	1025 1405 000	BUSHING	1							
11	0830 0100 300	O-RING	1					φ 30		
12	1021 1314 000	SEAL,oil	1							
13	0741 0006 201	C-RING	2					φ 62		
14	1945 1467 000	GEAR 44T	1					44T		
15	1041 1237 000	LINER	1							
16	3559 6104 100	SLEEVE	1							
17	0780 2354 220	BEARING,needle	1							
18	0740 0003 000	C-RING	1					φ 30		
19	1945 1769 000	GEAR 46T	1					46T		
20	1945 1468 000	GEAR 24T	1					24T		
21	0752 0663 050	BEARING,ball	1					6305		
22	0741 0006 201	C-RING	1					φ 62		
23	0740 0002 500	C-RING	1					φ 25		
24	1957 1253 000	COLLAR	1							
25~28	1957 1261 000	SHIM SET	AR							
25	0731 0002 001	LINER	AR					t=0.15		
26	0731 0002 002	LINER	AR					t=0.2		
27	0731 0002 004	LINER	AR					t=0.4		
28	0731 0002 010	LINER	AR					t=1.0		
29~31	1019 0625 000	SHIM SET	AR							
29	0731 0003 002	LINER	AR					t=0.2		
30	0731 0003 004	LINER	AR					t=0.4		
31	0731 0003 001	LINER	AR					t=0.15		
32	0731 0003 008	LINER	AR					t=0.8		
33	0731 0003 010	LINER	AR					t=1.0		

FIG. 417 HST UNIT



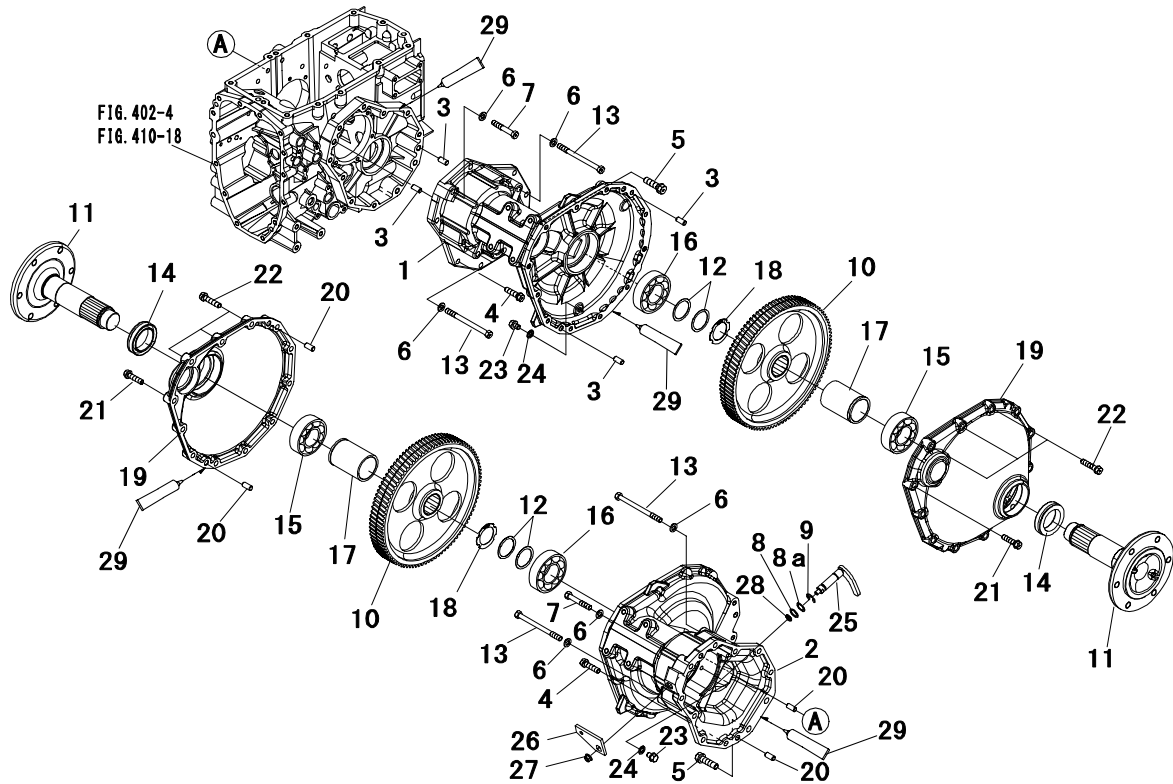
Key No.	Parts No.	Parts Name.	Q` ty				R/P	Application	Description	Remarks
			ALL							
1~54	1957 1301 000	HST UNIT	1							
1	1957 1301 150	SWASH PLATE	1							
2	1964 1301 170	PLATE,thrust	1							
3	1957 1301 170	SHAFT	1							
4	1957 1301 180	SHAFT	1							
5	1957 1301 190	COVER	1							
6	1957 1301 210	COVER	1							
7	1957 1301 220	COVER	1							
8	1957 1301 230	CAP	1							
9	0741 0003 500	C-RING	4					φ 35		
10	1957 1301 240	PLATE,valve	1							
11	1957 1301 250	PLATE,valve	1							
12	1963 1301 470	VALVE	1							
13	1963 1301 430	SPRING	1							
14	1957 1301 280	GASKET	1							
15	1957 1301 290	BOLT	8							
16	A544 0708 020	BOLT	4					M8 × 20		
17	A222 0106 014	SCREW	6					M6 × 14		
18	1957 1301 320	SPRING	2							
19	1957 1301 330	OIL,seal	2							
20	1957 1301 340	O-RING	1							
21	0830 0200 650	O-RING	2					φ 65		
22	0741 0006 500	C-RING	1					φ 65		
23	1957 1301 350	COLLAR	1							
24	1957 1301 360	BEARING	2							
25	1957 1301 370	BEARING	2							
26	0740 0002 500	C-RING	2					φ 25		
27	1957 1301 380	SEAL,oil	1							
28	1957 1301 390	PIN	2							
29	1957 1301 410	BUSHING	2							
30	1957 1301 420	POPET	2							
31	1957 1301 430	PLUG	2							
32	1957 1301 440	SPRING	2							
33	0830 1100 140	O-RING	2					φ 14		
34	1957 1301 450	VALVE ASSY	1							

FIG. 417 HST UNIT



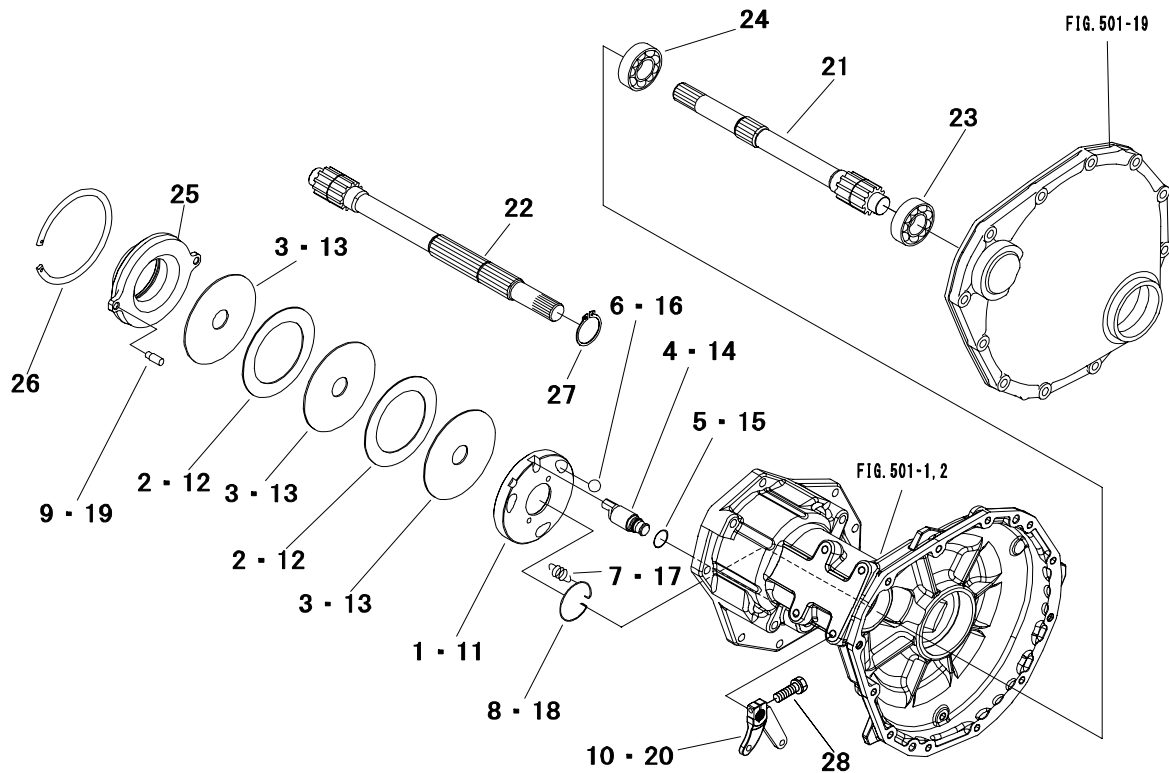
Key No.	Parts No.	Parts Name.	Q` ty				R/P	Application	Description	Remarks
			ALL							
35	1957 1301 460	PIN	4							
36	1957 1301 470	PLUG	5							
37	0830 1100 110	O-RING	5					φ 11		
38	1957 1301 480	PLUG	1							
39	1957 1301 490	SEAL,oil	1							
40	1957 1301 510	PLUG	1							
41	1957 1301 520	PLATE,thrust	1							
42	0830 0200 600	O-RING	1					φ 60		
43	1957 1301 530	PIN	2							
44~52	1957 1301 560	CYL BLOCK ASSY	2							
44	*	CYLINDER BLOCK	2							
45	*	PISTON	18							
46	*	PLATE,retainer	2							
47	*	HOLDER,retainer	2							
48	*	HOLDER,spring	2							
49	*	HOLDER,spring	2							
50	*	C-RING	2							
51	*	PIN	2							
52	*	SPRING	2							
53	*	CASE	1							
54	*	BLOCK	1							
55~63	1957 1301 550	KIT,repair	1							
55	1957 1301 280	GASKET	1							
56	1957 1301 330	OIL,seal	2							
57	1957 1301 340	O-RING	1							
58	0830 0200 650	O-RING	2					φ 65		
59	1957 1301 380	SEAL,oil	1							
60	0830 1100 140	O-RING	2					φ 14		
61	0830 1100 110	O-RING	5					φ 11		
62	1957 1301 490	SEAL,oil	1							
63	0830 0200 600	O-RING	1					φ 60		

FIG. 501 REAR AXLE (1/3)



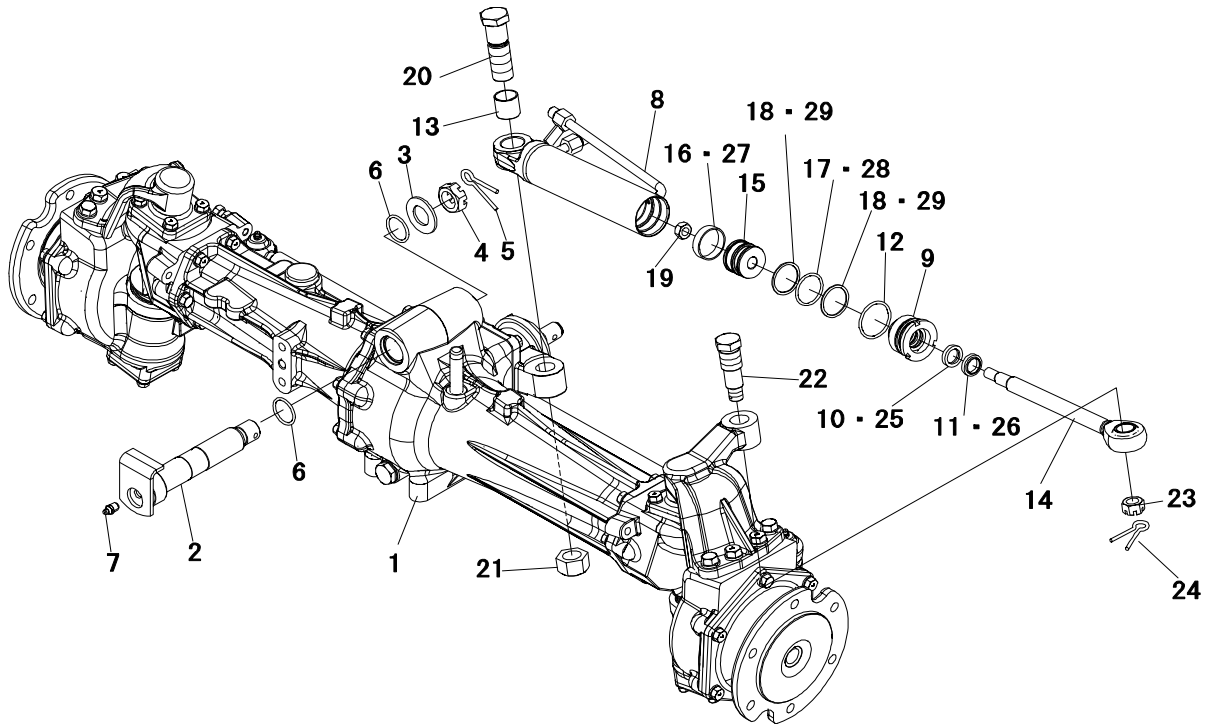
Key No.	Parts No.	Parts Name.	Q'ty				R/P	Application	Description	Remarks
			ALL							
1	1944 1551 AG0	CASE L.H,axle	1							
2	1944 1552 AG0	CASE R.H,axle	1							
3	0540 1010 020	PIN,dowel	4					φ 10 × 20		
4	F154 0110 040	BOLT,w/washer	12					M10 × 40		
5	F154 0112 045	BOLT,w/washer	4					M12 × 45		
6	A360 0101 002	WASHER,spring	6					M10		
7	A054 0110 060	BOLT 7T	2					M10 × 60		
8,8a	1019 1806 000	SHIM SET	AR							
8	0731 0001 504	LINER	AR					t=0.4		
8a	0731 0001 512	LINER	AR					t=1.2		
9	0742 0101 200	E-RING	1					φ 12		
10	1944 1565 000	GEAR 95T	2					95T		
11	1956 1568 AG1	SHAFT,axle	2							
12	0730 0005 202	LINER	AR					t=0.2		
	0730 0005 206	LINER	AR					t=0.6		
13	A054 0110 120	BOLT 7T	4					M10 × 120		
14	1038 1515 000	SEAL,oil	2							
15	0750 0062 100	BEARING,ball	2					6210		
16	0750 0063 080	BEARING,ball	2					6308		
17	1956 1571 001	COLLAR	2							
18	0740 0004 801	C-RING	2					φ 48		
19	1956 1554 AG0	COVER,axle	2							
20	0540 1010 020	PIN,dowel	4					φ 10 × 20		
21	F154 0110 040	BOLT,w/washer	18					M10 × 40		
22	F154 0110 045	BOLT,w/washer	6					M10 × 45		
23	1022 1733 000	BOLT	2							
24	0833 1001 000	WASHER,seal	2					M10		
25	1044 1423 001	SHIFTER	1							
26	1044 1424 AG1	ARM,diff lock	1							
27	F301 0108 001	NUT,flange	1					M8		
28	0830 0100 110	O-RING	1					φ 11		
29	TB1206D	GASKET	AR							

FIG. 502 REAR AXLE (2/3)



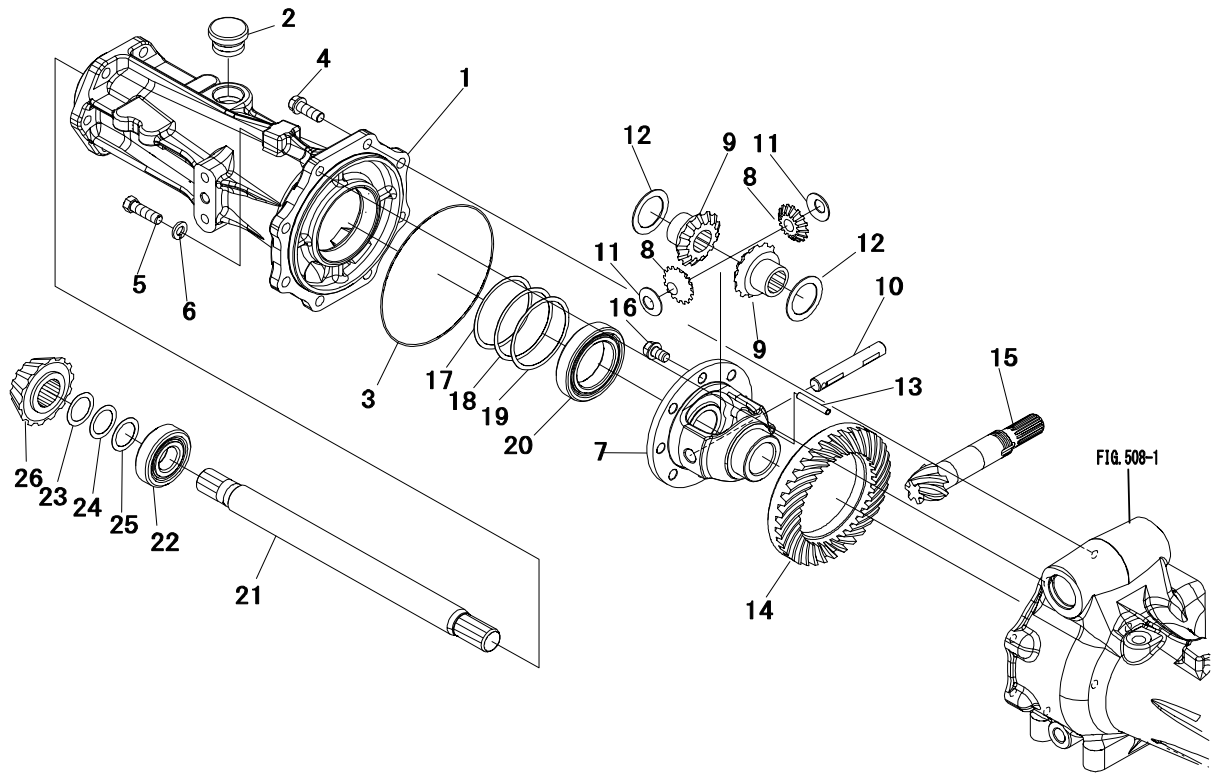
Key No.	Parts No.	Parts Name.	Q`ty				R/P	Application	Description	Remarks
			ALL							
1~9	1944 1556 000	BRAKE ASSY LH	1							
1	1044 1556 100	PLATE LH,cam	1							
2	1044 1541 200	PLATE,mating	2							
3	1044 1541 300	DISK	3							
4	1044 1556 500	CAM,brake	1							
5	0830 0100 160	O-RING	1					φ 16		
6	1044 1541 500	BALL,steel	3							
7	1032 1501 500	SPRING,return	2							
8	1044 1556 900	RING	1							
9	1044 1556 800	PIN	2							
10	1945 2709 AG0	ARM,brake	1							
11~19	1944 1557 000	BRAKE ASSY RH	1							
11	1044 1557 100	PLATE RH,cam	1							
12	1044 1541 200	PLATE,mating	2							
13	1044 1541 300	DISK	3							
14	1044 1556 500	CAM,brake	1							
15	0830 0100 160	O-RING	1					φ 16		
16	1044 1541 500	BALL,steel	3							
17	1032 1501 500	SPRING,return	2							
18	1044 1556 900	RING	1							
19	1044 1556 800	PIN	2							
20	1945 2709 AG0	ARM,brake	1							
21	1957 1561 000	SHAFT LH,diff	1							
22	1957 1562 000	SHAFT RH,diff	1							
23	0752 0663 050	BEARING,ball	2					6305		
24	0752 0662 060	BEARING,ball	2					6206		
25	1044 1558 000	HOLDER	2							
26	1044 1517 000	RING	2							
27	0740 0003 000	C-RING	1					φ 30		
28	F144 0106 025	BOLT,w/washer	2					M6 × 25		

FIG. 506 FRONT AXLE (1/6)



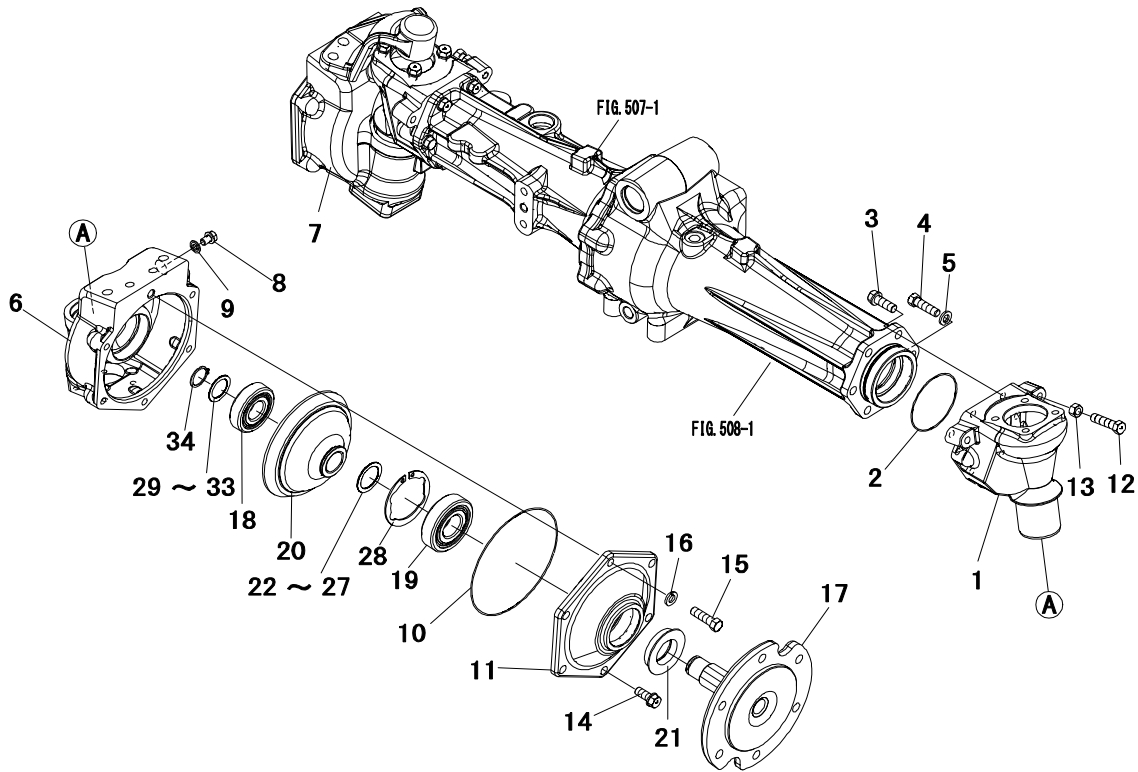
Key No.	Parts No.	Parts Name.	Q`ty				R/P	Application	Description	Remarks
			ALL							
1	*	F/A ASSY	1						Inc507~511	
2	1945 3165 AG0	PIN,center	1							
3	1135 2064 000	PLATE	1							
4	A313 0102 401	NUT,slotted	1					M24		
5	0520 0150 040	PIN,split	1					φ 5 × 40		
6	0830 0100 290	O-RING	2					φ 29		
7	A650 3100 300	NIPPLE,grease	1					PT=1/8		
8~19	1945 3171 AG0	CYLINDER ASSY	1							
8	*	TUBE ASSY	1							
9	1963 2211 AG0	CASE	1							
10	1963 2212 100	SEAL,rod	1							
11	1963 2212 200	SEAL,dust	1							
12	0830 1100 400	O-RING	1					φ 40		
13	0796 3024 250	BUSHING	1							
14	*	ROD,cylinder	1							
15	1963 2208 000	PISTION	1							
16	1963 2209 100	WEAR RING	1							
17	0830 1100 340	O-RING	1					φ 34		
18	0832 0100 340	RING,backup	2					φ 34		
19	A353 0112 000	NUT,lock	1					M12		
20	1963 2225 000	BOLT	1							
21	A073 0124 001	NUT	1					M24		
22	1963 2267 000	BOLT	1							
23	A313 0101 601	NUT	1					M16		
24	0520 0140 032	PIN,split	1					φ 4.0 × 32		
25,26	1963 2212 000	KIT SEAL B	1							
25	1963 2212 100	SEAL,rod	1							
26	1963 2212 200	SEAL,dust	1							
27~29	1963 2209 000	KIT SEAL A	1							
27	1963 2209 100	WEAR RING	1							
28	0830 1100 340	O-RING	1					φ 34		
29	0832 0100 340	RING,backup	2					φ 34		

FIG. 507 FRONT AXLE (2/6)



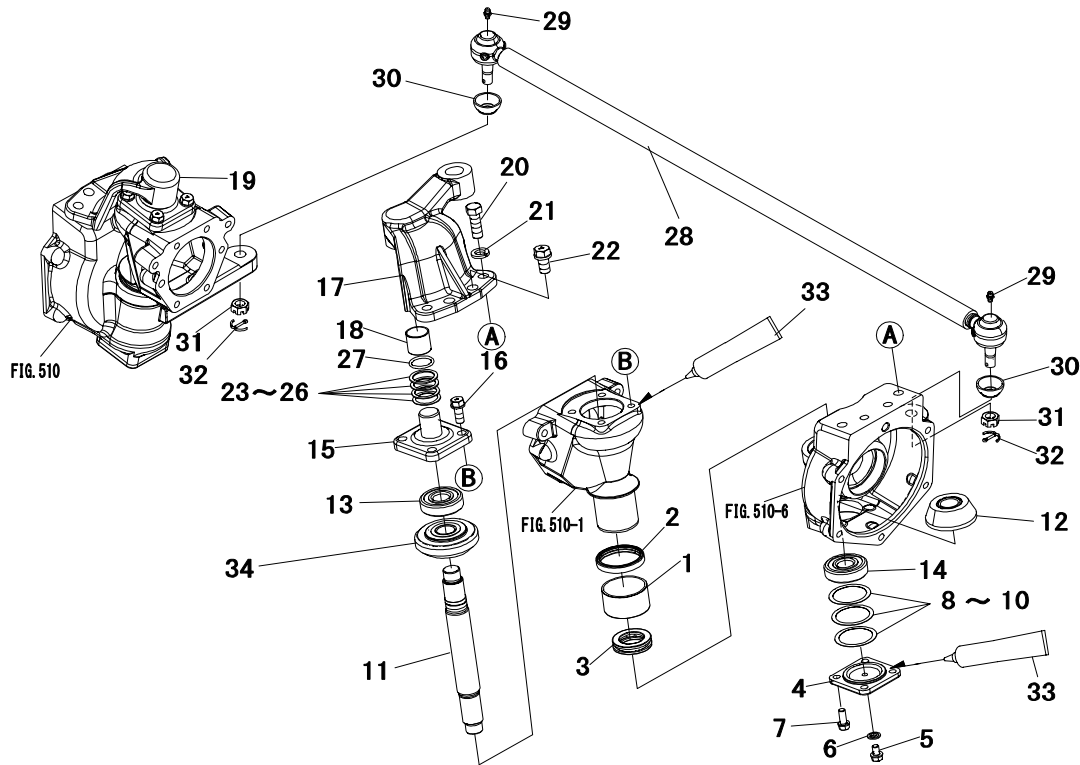
Key No.	Parts No.	Parts Name.	Q` ty				R/P	Application	Description	Remarks
			ALL							
1	1030 2119 AG2	CASE B,center	1							
2	1191 1211 000	CAP,oil	1							
3	0830 0501 500	O-RING	1					φ 150		
4	F155 0110 030	BOLT,w/washer	7					M10 × 30		
5	69542-64700	BOLT	1							
6	A360 0101 002	WASHER,spring	1					M10		
7~16	1964 2113 001	DIFF CASE ASSY	1							
7	1031 2121 000	CASE,diff	1							
8	1019 1412 000	PINION,mate	2							
9	1019 1413 000	GEAR,side	2							
10	1019 1414 000	SHAFT,pinion	1							
11	1019 1415 000	WASHER,thrust	2							
12	1019 1416 000	WASHER,thrust	2							
13	0550 0006 040	PIN,spring	1					φ 6 × 40		
14,15	1964 2114 000	6-35 SET	1							
14	*	GEAR,ring	1							
15	*	SHAFT,pinion	1							
16	1218 6568 000	BOLT	8							
17~19	1019 0623 000	SHIM SET	1							
17	1007 0618 000	LINER	AR					t=0.1		
18	1007 0618 100	LINER	AR					t=0.2		
19	1007 0618 200	LINER	AR					t=0.4		
20	0750 0060 100	BEARING,ball	1					6010		
21	1030 2128 000	SHAFT,diff	1							
22	0750 0063 050	BEARING,ball	1					6305		
23~25	1019 0626 000	SHIM SET,pinion	1							
23	1135 3016 000	LINER	AR					t=0.1		
24	0731 0002 502	LINER	AR					t=0.2		
25	0731 0002 504	LINER	AR					t=0.4		
26	1945 3121 000	GEAR 14T	1					14T		

FIG. 510 FRONT AXLE (5/6)



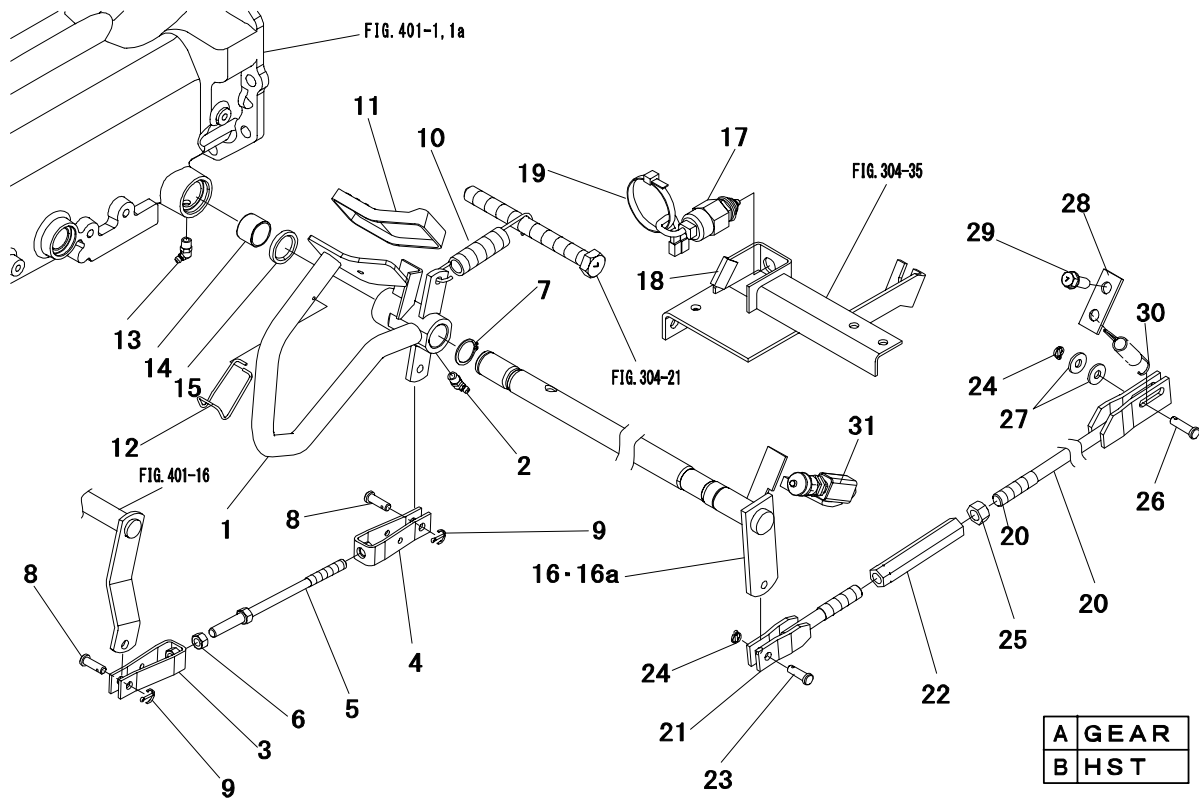
Key No.	Parts No.	Parts Name.	Q`ty				R/P	Application	Description	Remarks
			ALL							
1	1030 2136 AG0	CASE,king pin	2							
2	0830 0500 750	O-RING	2					φ 75		
3	F155 0110 030	BOLT,w/washer	10					M10 × 30		
4	69542-64700	BOLT	2							
5	A360 0101 002	WASHER,spring	2					M10		
6	1964 2121 AG0	CASE L.H,final	1							
7	1964 2122 AG0	CASE R.H,final	1							
8	2740 3214 200	PLUG	2							
9	0833 1000 800	WASHER,seal	2					M8		
10	0830 0501 450	O-RING	2					φ 145		
11	1021 2119 AG0	COVER	2							
12	A052 0110 040	BOLT 7T	2					M10 × 40		
13	A303 0110 002	NUT	2					M10		
14	F155 0110 025	BOLT,w/washer	10					M10 × 25		
15	69542-64700	BOLT	2							
16	A360 0101 002	WASHER,spring	2					M10		
17	1040 2121 AG0	SHAFT	2							
18	0750 0063 050	BEARING,ball	2					6305		
19	0750 0063 060	BEARING,ball	2					6306		
20	1956 2143 000	GEAR 32T	2					32T		
21	0841 2355 212	SEAL,oil	1					TCFY35521		
22~26	1021 2159 000	SHIM SET	AR							
22	0731 0003 001	LINER	AR					t=0.15		
23	0731 0003 004	LINER	AR					t=0.4		
24	0731 0003 008	LINER	AR					t=0.8		
25	0731 0003 010	LINER	AR					t=1.0		
26	0731 0003 012	LINER	AR					t=1.2		
27	0731 0003 002	LINER	AR					t=0.2		
28	0741 0007 201	C-RING	2					φ 72		
29~33	1021 2158 000	SHIM SET	AR							
29	1135 3016 000	LINER	AR					t=0.1		
30	0731 0002 504	LINER	AR					t=0.4		
31	0731 0002 508	LINER	AR					t=0.8		
32	0731 0002 510	LINER	AR					t=1.0		
33	0731 0002 512	LINER	AR					t=1.2		

FIG. 511 FRONT AXLE (6/6)



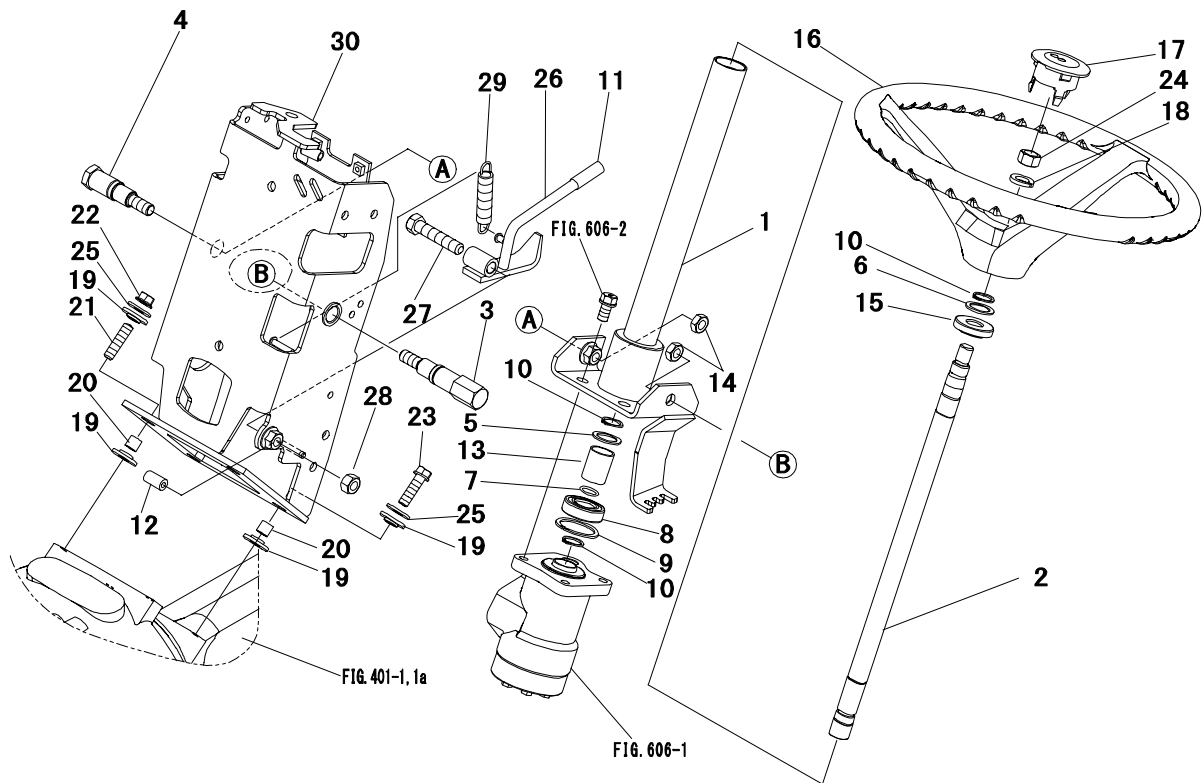
Key No.	Parts No.	Parts Name.	Q`ty				R/P	Application	Description	Remarks
			ALL							
1	0796 1050 300	BUSHING	2							
2	69542-65100	SEAL,oil	2							
3	0760 0051 106	BEARING,thrust	2					51106		
4	1007 0638 AG1	COVER	2							
5	2740 3214 200	PLUG	2							
6	0833 1000 800	WASHER,seal	2					M8		
7	F154 0108 020	BOLT,w/washer	8					M8 × 20		
8~10	1963 2139 000	SHIM SET	AR							
8	0730 0005 201	LINER	AR					t=0.15		
9	0730 0005 202	LINER	AR					t=0.2		
10	0730 0005 203	LINER	AR					t=0.3		
11	1964 2124 001	SHAFT	2							
12	1956 2142 000	GEAR 12T	2					12T		
13	0750 0563 044	BEARING,ball	2					6304DD		
14	0750 0263 040	BEARING,ball	2					6304		
15	1021 2120 AG0	HOLDER	2							
16	F155 0110 025	BOLT,w/washer	8					M10 × 25		
17	1964 2126 AG0	KNUCKLE ARM LH	1							
18	0796 1025 250	BUSHING	2							
19	1964 2127 AG0	NUCKLE ARM RH	1							
20	69542-63301	BOLT	4							
21	A360 0101 202	WASHER,spring	4					M12		
22	F155 0112 025	BOLT,w/washer	4					M12 × 25		
23~26	1021 2157 000	SHIM SET	1							
23	1438 1319 300	LINER F,thrust	AR					t=1.4		
24	1438 1319 400	LINER G,thrust	AR					t=1.2		
25	1438 1319 500	LINER H,thrust	AR					t=1.0		
26	1438 1319 600	LINER J,thrust	AR					t=0.8		
27	0830 0100 240	O-RING	2					φ 24		
28	1945 3151 AG0	TIE ROD	1							
29	A650 0100 600	NIPPLE,grease	2							
30	1030 2157 200	COVER,dust	2							
31	1030 2157 400	NUT	2							
32	1030 2157 500	PIN,split	2							
33	TB1206D	GASKET	AR							

FIG. 602 CLUTCH PEDAL



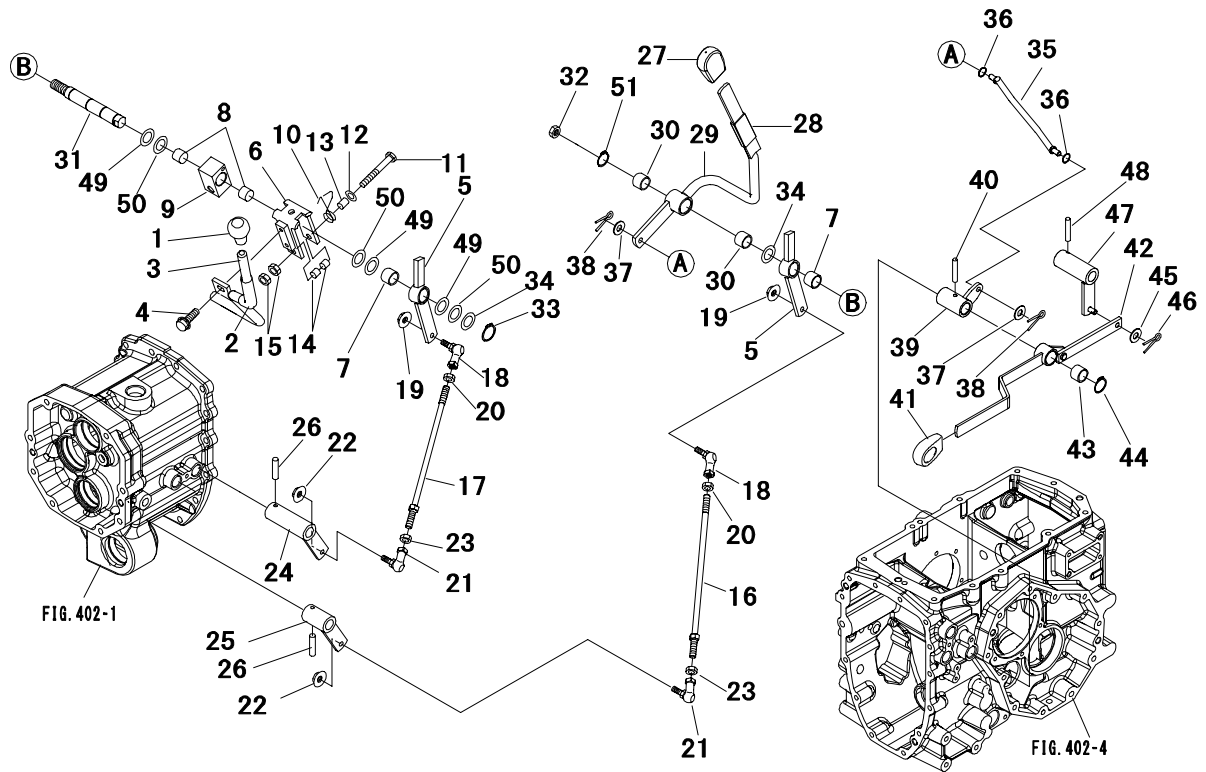
Key No.	Parts No.	Parts Name.	Q'ty				R/P	Application	Description	Remarks
			A	B						
1	1957 1811 AG0	PEDAL,clutch	1	1						
2	A651 3100 300	NIPPLE,grease	1	1						
3	1039 1823 000	JOINT	1	1						
4	1044 1814 000	JOINT	1	1						
5	1044 1813 000	ROD,clutch	1	1						
6	A301 0110 002	NUT	1	1				M10		
7	0740 0102 500	C-RING	1	1				φ 25		
8	0562 1108 025	PIN,clevis	2	2				φ 8 × 25		
9	0520 0125 020	PIN,split	2	2				φ 2.5 × 20		
10	1044 1841 000	SPRING	1	1						
11	1193 1812 000	COVER,pedal	1	1						
12	1039 1815 001	HOOK	1	1						
13	A651 3100 300	NIPPLE,grease	1	1						
14	0797 2025 200	BUSHING	1	1						
15	0840 0025 355	OIL SEAL	1	1						
16	1945 7626 AG0	SHAFT,brake	1							
16a	1945 7625 AG0	SHAFT,brake		1						
17	1040 2821 000	SWITCH,safety	1	1						
18	1025 3429 000	BAND,rubber	1	1						
19	0051 1070 070	BAND,wire	1	1						
20	1945 7627 000	ROD,brake	1	1						
21	1944 1831 002	ROD,brake	1	1						
22	1944 1833 001	JOINT	1	1						
23	0562 1108 025	PIN,clevis	1	1				φ 8 × 25		
24	0520 0125 015	PIN,split	2	2				φ 2.5 × 15		
25	A301 0114 002	NUT	1	1				M14		
26	0562 1108 030	PIN,clevis	1	1				φ 8 × 30		
27	0350 0150 822	WASHER	2	2				M8		
28	1945 7651 AG0	PLATE	1	1						
29	F154 0110 025	BOLT,w/washer	1	1				M10 × 25		
30	3200 2408 001	SPRING	1	1						
31	1040 2827 000	SWITCH	1	1						

FIG. 605 STEERING (1/2)



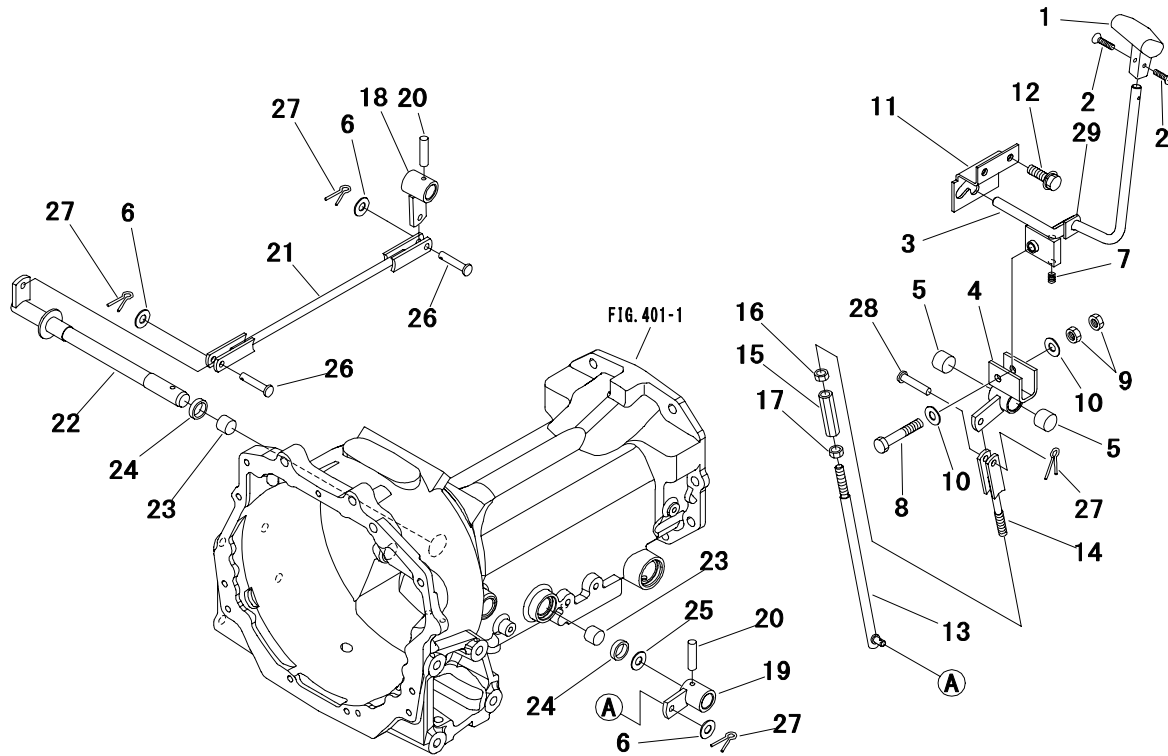
Key No.	Parts No.	Parts Name.	Q` ty				R/P	Application	Description	Remarks
			ALL							
1	1957 2202 AG0	MAST,steering	1							
2	1958 2203 000	SHAFT,steering	1							
3	1957 2217 000	BOLT	1							
4	1957 2216 000	BOLT	1							
5	0731 0002 016	LINER	1					t=1.6		
6	0731 0102 016	LINER	1					t=1.6		
7	0830 0100 160	O-RING	1					φ 16		
8	HA53 6004 000	BEARING	1							
9	0741 0004 201	C-RING	1					φ 42		
10	0740 0001 900	C-RING	3					φ 19		
11	1421 2284 000	GRIP	1							
12	3544 7219 102	CUSHION	1							
13	3951 0814 000	SPRING	1							
14	A301 0112 003	NUT	2					M12		
15	1044 2291 000	BUSHING,column	1							
16,17	1044 2205 000	WHEEL,steering	1							
16	*	WHEEL,steering	1							
17	1044 2207 000	CAP,center	1							
18	A360 0101 402	WASHER,spring	1					M14		
19	1036 6076 000	RUBBER	8							
20	1037 3021 000	COLLAR	4							
21	A062 0110 025	BOLT,stud	2					M10 × 25		
22	F301 0110 000	NUT,flange	2					M10		
23	F154 0110 035	BOLT,w/washer	2					M10 × 35		
24	A303 0114 002	NUT	1					M14		
25	0350 0151 026	WASHER	4					M10		
26	1957 2255 AG0	LEVER	1							
27	A050 0112 060	BOLT 7T	1					M12 × 60		
28	A301 0112 002	NUT	1					M12		
29	2772 2333 010	SPRING	1							
30	1945 8301 AG0	BRACKET,mast	1							

FIG. 607 TRANSMISSION CONTROL (GEAR) (1/3)



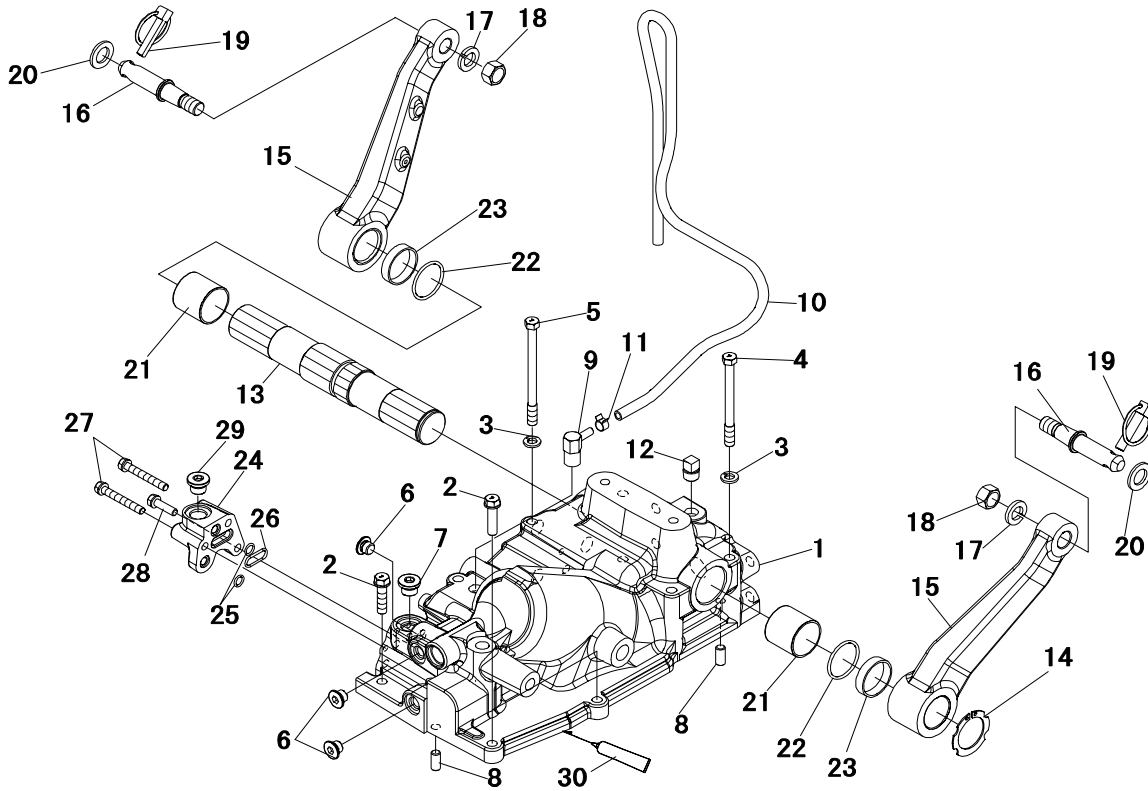
Key No.	Parts No.	Parts Name.	Q` ty				R/P	Application	Description	Remarks
			ALL							
1	0693 0014 460	GRIP	1							
2	1035 1749 000	PIPE	1							
3	1944 1751 AG0	LEVER,main	1							
4	H154 0108 016	BOLT,w/washer	2					M8 × 16		
5	1044 1752 AG1	ARM,main	2							
6	1044 1753 AG0	CLANK	1							
7	0796 1020 150	BUSHING	2							
8	0796 1020 150	BUSHING	2							
9	1030 1724 AG0	BOSS	1							
10	1025 1127 004	SPRING	1							
11	A534 0110 080	BOLT 7T	1					M10 × 80		
12	0350 0141 022	WASHER	1					M10		
13	1025 1120 001	COLLAR	1							
14	0797 1010 150	BUSHING	2							
15	A301 0110 002	NUT	2					M10		
16	1957 1754 000	ROD,main(1-2)	1							
17	1957 1755 000	ROD,main(3-4)	1							
18	1025 1135 000	JOINT,ball	2							
19	F301 0108 000	NUT,flange	2					M8		
20	A303 2110 002	NUT	2					M10		
21	3704 1577 000	JOINT,ball	2							
22	F301 0108 000	NUT,flange	2					M8		
23	A303 0110 002	NUT	2					M10		
24	1044 1756 AG0	LINK,main(1-2)	1							
25	1044 1757 AG0	LINK,main(3-4)	1							
26	1038 1725 000	PIN,spring	2							
27	1039 2491 000	GRIP	1							
28	1044 2476 000	TUBE	1							
29	1945 7761 AG0	LEVER,sub	1							
30	0797 2020 100	BUSHING	2							
31	1044 1762 001	SHAFT,main.sub	1							
32	A301 0116 003	NUT	1					M16		
33	0740 0102 000	C-RING	1					φ 20		
34	0731 0102 010	LINER	2					t=1.0		
35	1046 1763 000	ROD,sub	1							

FIG. 609 TRANSMISSION CONTROL (GEAR) (3/3)



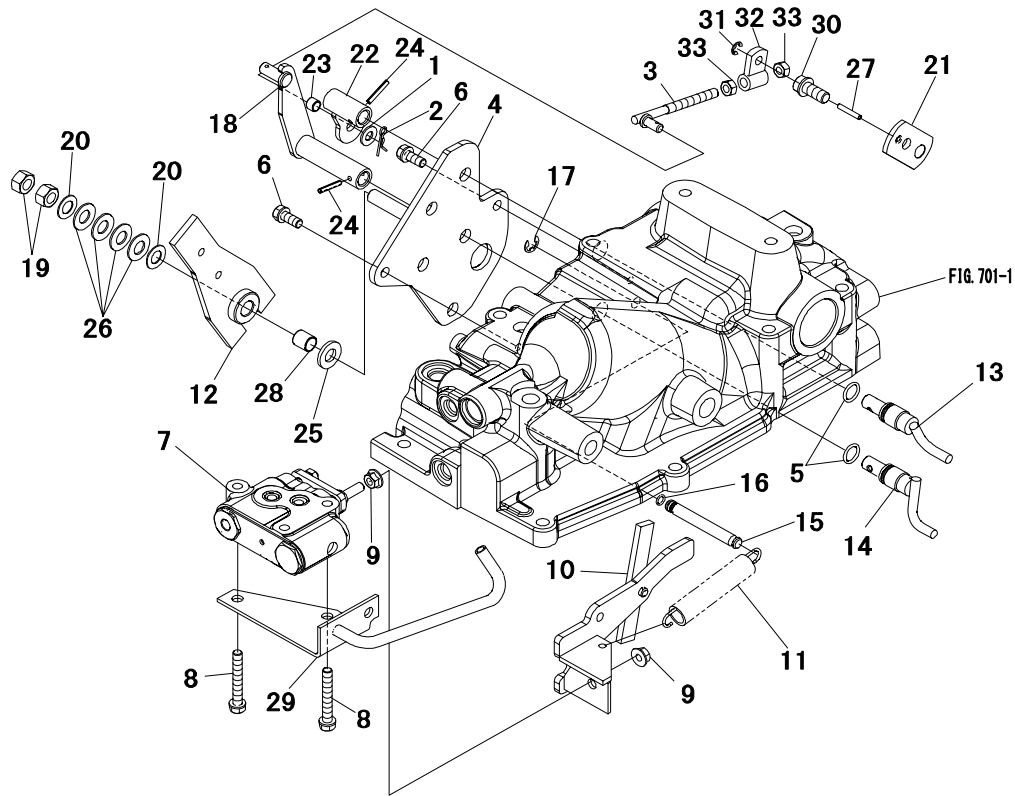
Key No.	Parts No.	Parts Name.	Q`ty				R/P	Application	Description	Remarks
			ALL							
1	0697 0012 609	GRIP	1							
2	A222 0104 008	SCREW	2					M4 × 8		
3	1957 1792 AG0	LEVER,shuttle	1							
4	1957 1789 AG0	ARM,shuttle	1							
5	0797 2020 100	BUSHING	2							
6	0350 0150 822	WASHER	3					M8		
7	1031 1716 000	SPRING	1							
8	A534 0110 060	BOLT 7T	1					M10 × 60		
9	A301 0110 002	NUT	2					M10		
10	0350 0151 026	WASHER	2					M10		
11	1957 1799 AG0	PLATE,guide	1							
12	H154 0108 020	BOLT,w/washer	2					M8 × 20		
13	1044 1787 000	ROD F.R	1							
14	1044 1796 000	JOINT	1							
15	1040 1817 000	JOINT	1							
16	A301 0110 002	NUT	1					M10		
17	A301 2110 001	NUT	1					M10		
18	1044 1791 AG0	LINK F.R	1							
19	1044 1793 AG0	LINK,shuttle	1							
20	1038 1725 000	PIN,spring	2							
21	1044 1795 000	ROD F.R	1							
22	1044 1797 000	SHAFT F.R	1							
23	0796 1020 150	BUSHING	2							
24	0840 0020 325	SEAL,oil	2					VC20325		
25	0350 0162 040	WASHER	1					M20		
26	0562 0108 028	PIN,clevis	2					φ 8 × 28		
27	0520 0125 020	PIN,split	4					φ 2.5 × 20		
28	0562 0108 025	PIN,clevis	1					φ 8 × 25		
29	1957 1795 000	RUBBER	1							

FIG. 701 HYDRAULIC LIFT (1/5)



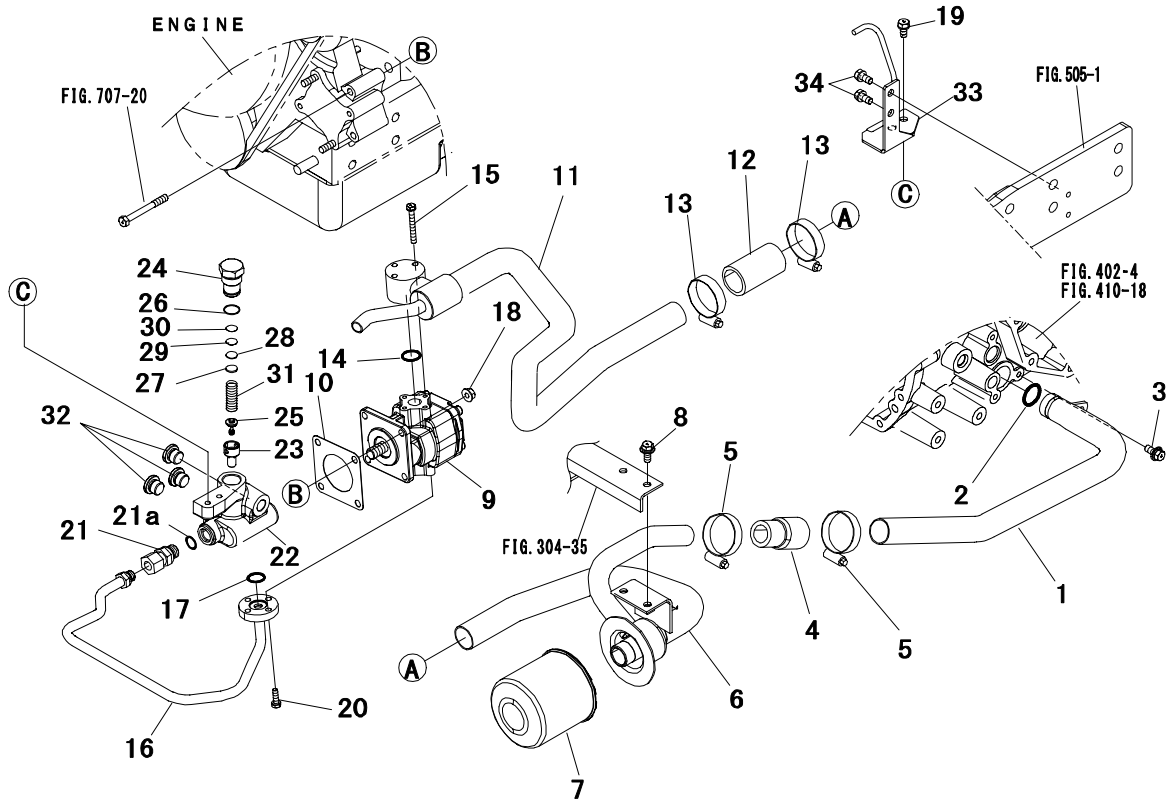
Key No.	Parts No.	Parts Name.	Q` ty				R/P	Application	Description	Remarks
			ALL							
1	1957 2401 AG1	HOUSING,hydraul	1							
2	F154 0110 040	BOLT,w/washer	3					M10 × 40		
3	A360 0101 002	WASHER,spring	6					M10		
4	A054 0110 110	BOLT 7T	5					M10 × 110		
5	A054 0110 130	BOLT 7T	1					M10 × 130		
6	HA43 0102 000	PLUG	3							
7	HA43 0103 000	PLUG	1							
8	0540 1010 020	PIN,dowel	2					φ 10 × 20		
9	1025 2425 000	BREATHER	1							
10	0980 4071 003	HOSE	1							
11	0050 4110 005	CLAMP,hose	1					φ 10		
12	A600 0101 700	PLUG,taper	1					PT=3/8		
13	1956 2407 000	SHAFT,hydraulic	1							
14	0740 0004 001	C-RING	1					φ 40		
15	1956 2408 AG0	ARM,lift	2							
16	1044 2409 000	PIN,lift arm	2							
17	A360 0101 602	WASHER,spring	2					M16		
18	A303 0116 002	NUT	2					M16		
19	1032 3012 000	PIN,linch	2							
20	1032 3016 000	WASHER	2							
21	0796 1040 400	BUSHING	2							
22	0830 0120 400	O-RING	2					φ 40		
23	1021 2421 000	COLLAR	2							
24	1044 2457 AG0	BLOCK	1							
25	0830 1100 101	O-RING	2					φ 10		
26	0830 1100 220	O-RING	1					φ 22		
27	F154 0108 060	BOLT,w/washer	2					M8 × 60		
28	F154 0108 030	BOLT,w/washer	1					M8 × 30		
29	HA43 0103 000	PLUG	1							
30	TB1206D	GASKET	AR							

FIG. 703 HYDRAULIC LIFT (3/5)



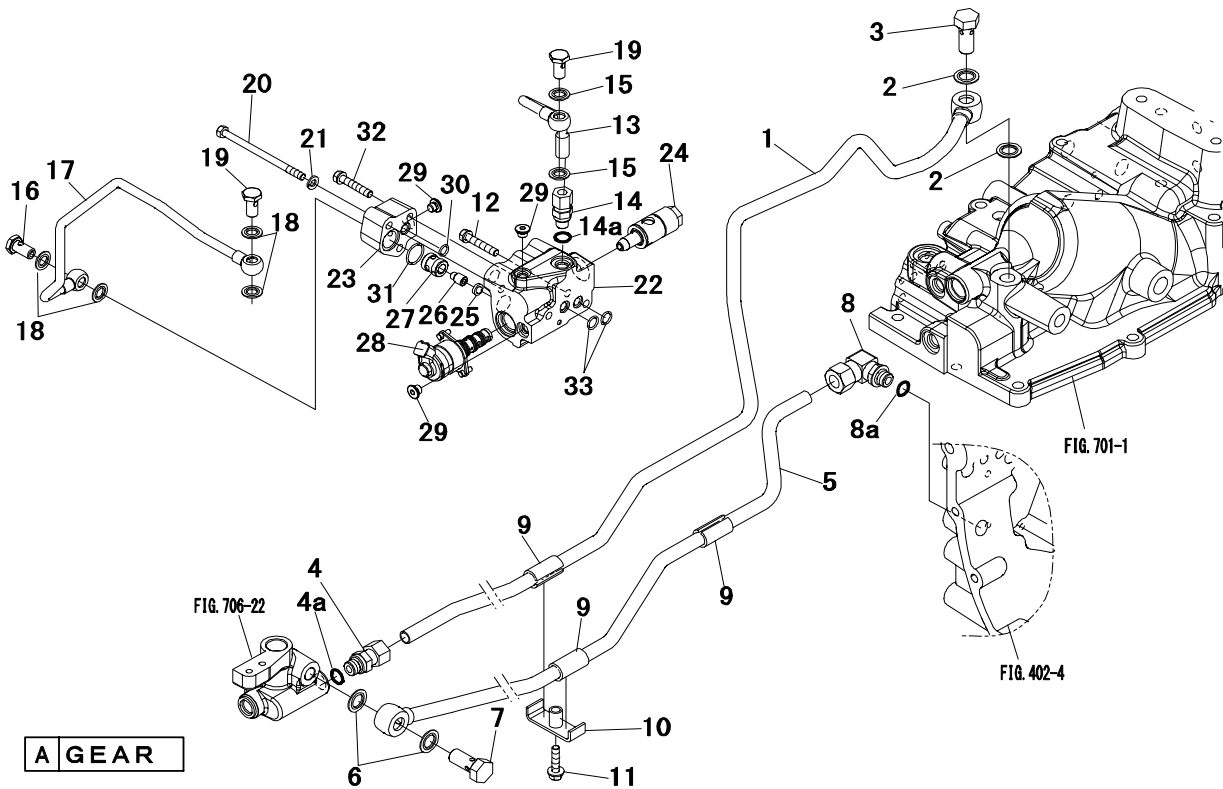
Key No.	Parts No.	Parts Name.	Q'ty				R/P	Application	Description	Remarks
			ALL							
1	0350 0140 818	WASHER	1					M8		
2	0521 0108 000	PIN,snap	1					φ 8		
3	1044 2427 000	ADJUSTER	1							
4	1957 2429 AG0	PLATE	1							
5	0830 0100 140	O-RING	2					φ 14		
6	F154 0108 020	BOLT,w/washer	2					M8 × 20		
7	1943 2415 000	VALVE,control	1						RefFIG705	
8	F154 0108 055	BOLT,w/washer	2					M8 × 55		
9	F301 0108 000	NUT,flange	2					M8		
10	1957 2431 000	LINK ASSY	1							
11	3501 1105 000	SPRING	1							
12	1044 2461 000	P/C ARM	1							
13	1044 2436 000	ARM,feed back	1							
14	1044 2438 000	P/C ARM	1							
15	1044 2441 000	PIN	1							
16	0830 0100 070	O-RING	1					φ 7		
17	0742 0100 800	E-RING	1					φ 8		
18	1957 2443 000	P/C LEVER	1							
19	A301 0112 002	NUT	2					M12		
20	3121 2559 000	LINER	2							
21	1044 2449 000	PLATE	1							
22	1044 2447 000	LINK,feed back	1							
23	0796 1008 080	BUSHING	1							
24	1038 2476 000	PIN,spring	2							
25	1904 1264 000	LINING,brake	1							
26	0356 0101 201	SPRING,conical	4							
27	1038 2476 000	PIN,spring	1							
28	0797 2012 150	BUSHING	1							
29	1044 2454 000	PIPE,lubricate	1							
30	F154 0110 025	BOLT,w/washer	1					M10 × 25		
31	0742 0100 600	E-RING	1					φ 6		
32	1044 2426 000	JOINT	1							
33	A301 0108 002	NUT	2					M8		

FIG. 706 HYDRAULIC LINE (1/5)



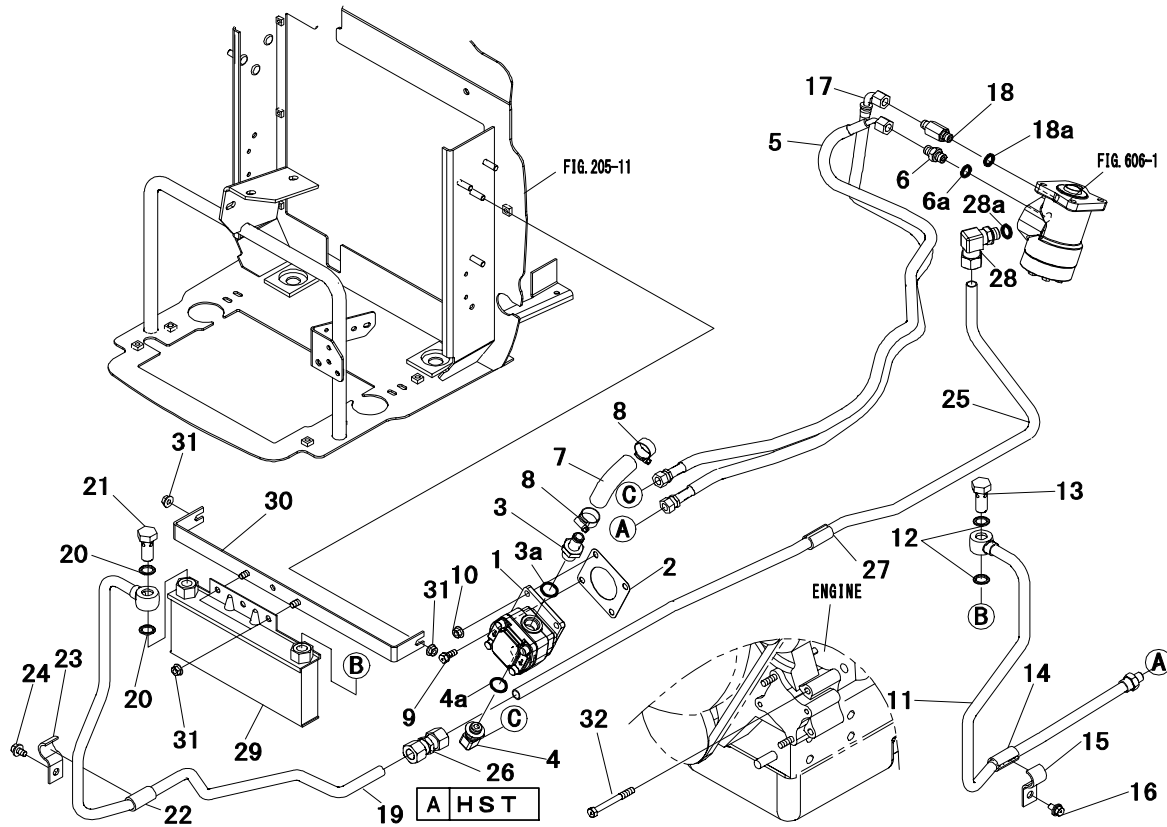
Key No.	Parts No.	Parts Name.	Q'ty				R/P	Application	Description	Remarks
			ALL							
1	1958 2505 AG0	PIPE A,suction	1							
2	0830 0100 240	O-RING	1					φ 24		
3	H154 0108 020	BOLT,w/washer	1					M8 × 20		
4	1994 2525 000	HOSE A	1							
5	HA23 0101 000	CLIP,hose	2							
6	1956 2506 AG1	PIPE B,suction	1							
7	1964 2509 000	FILTER	1							
8	H154 0108 020	BOLT,w/washer	2					M8 × 20		
9	1030 2501 002	PUMP,hydraulic	1							
10	67700-20101	PACKING	1							
11	1945 2107 AG1	PIPE C,suction	1							
12	1176 2527 000	HOSE	1							
13	HA23 0101 000	CLIP,hose	2							
14	0830 0100 200	O-RING	1					φ 20		
15	F144 0106 050	BOLT,w/washer	3					M6 × 50		
16	1945 2181 AG0	PIPE A PRESSURE	1							
17	0830 1100 180	O-RING	1							
18	F301 0108 001	NUT,flange	4					M8		
19	F154 0108 016	BOLT,w/washer	2					M8 × 16		
20	F144 0106 020	BOLT,w/washer	4					M6 × 20		
21	0620 3115 170	NIPPLE	1							Inc21a
21a	0830 1100 140	O-RING	1					φ 14		
22~32	1957 2585 AG0	BLOCK ASSY	1							
22	1957 2586 000	BLOCK	1							
23	1005 2405 191	HOUSING	1							
24	1005 2405 120	PLUG	1							
25	1005 2405 180	POPPET	1							
26	0830 0500 160	O-RING	1					φ 16		
27	1005 2405 130	SHIM	AR					t=0.1		
28	1005 2405 140	SHIM	AR					t=0.3		
29	1005 2405 150	SHIM	AR					t=1.0		
30	1005 2405 160	SHIM	AR					t=2.0		
31	1005 2405 170	SPRING	1							
32	HA43 0103 000	PLUG	3							
33	1945 2156 AG0	BRACKET	1							

FIG. 708 HYDRAULIC LINE (3/5)



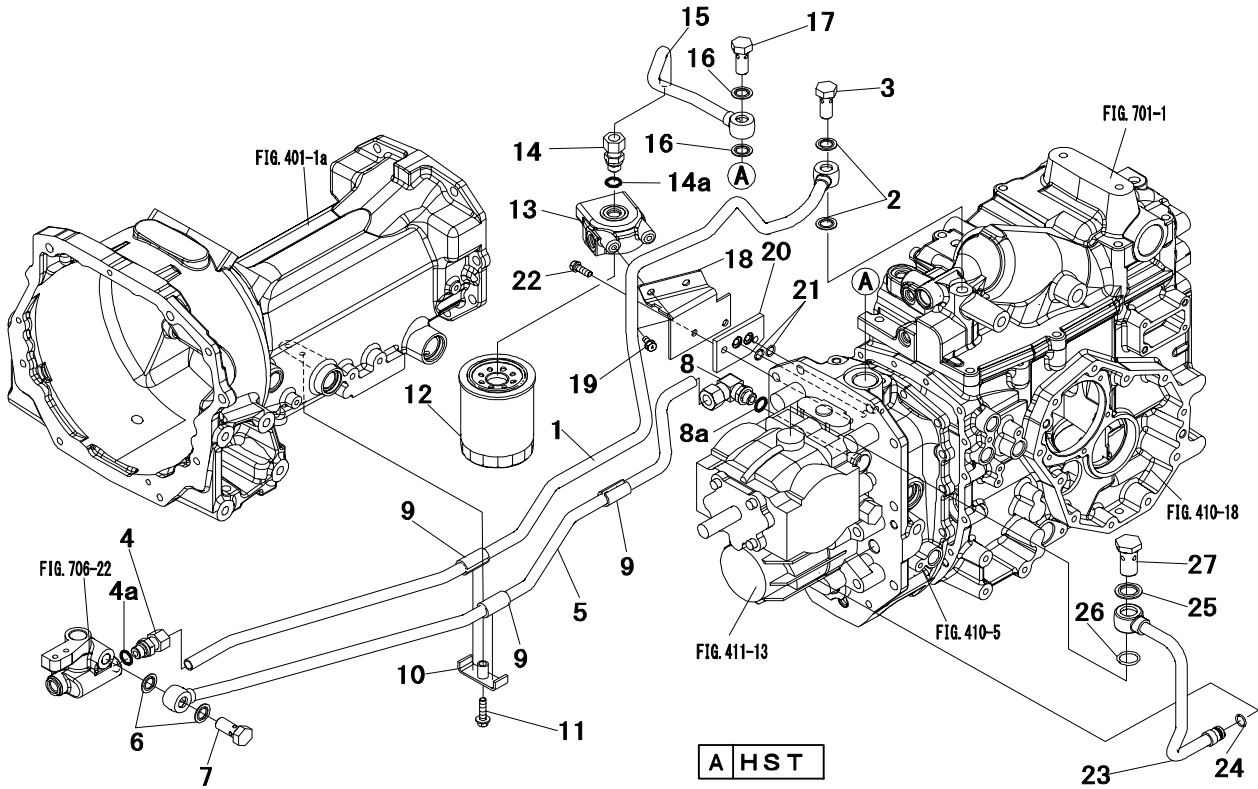
Key No.	Parts No.	Parts Name.	Q`ty				R/P	Application	Description	Remarks
			A							
1	1945 2182 AG0	PIPE B PRESSURE	1							
2	0833 1001 600	WASHER,seal	2					M16		
3	1030 2534 000	BOLT,eye	1							
4	0620 3115 170	NIPPLE	1						Inc4a	
4a	0830 1100 140	O-RING	1					φ 14		
5	1945 2183 AG0	PIPE A RETURN	1							
6	0833 1001 600	WASHER,seal	2					M16		
7	1030 2534 000	BOLT,eye	1							
8	0620 5115 170	ELBOW	1						Inc8a	
8a	0830 1100 140	O-RING	1					φ 14		
9	1180 2163 000	CUSHION	3							
10	1957 2536 000	CLAMP	1							
11	H154 0108 035	BOLT,w/washer	1					M8 × 35		
12	F154 0108 045	BOLT,w/washer	1					M8 × 45		
13	1957 2598 AG0	PIPE IND,lublic	1							
14	0620 3110 130	NIPPLE	1						Inc14a	
14a	0830 1100 110	O-RING	1					φ 11		
15	0833 1001 200	WASHER,seal	2					M12		
16	1174 2443 001	BOLT EYE	1							
17	1957 2561 AG0	PIPE IND,pressu	1							
18	0833 1001 200	WASHER,seal	4					M12		
19	1174 2443 001	BOLT EYE	2							
20	A054 0108 120	BOLT	1					M8 × 120		
21	A360 0100 802	WASHER,spring	1					M8		
22~33	1945 2150 AG0	IND VALVE ASSY	1							
22	1957 2560 000	BLOCK ASSY	1							
23	1957 2552 000	COVER	1							
24	1957 2553 000	RELIEF VALVE AS	1							
25	1957 2554 000	FILTER	1							
26	1961 2534 000	POPPET	1							
27	1961 2536 000	SLEEVE	1							
28	1050 2158 000	VALVE	1							
29	HA43 0101 000	PLUG	3							
30	0830 1100 101	O-RING	1					φ 10		
31	0830 1100 220	O-RING	1					φ 22		

FIG. 709 HYDRAULIC LINE (4/5)



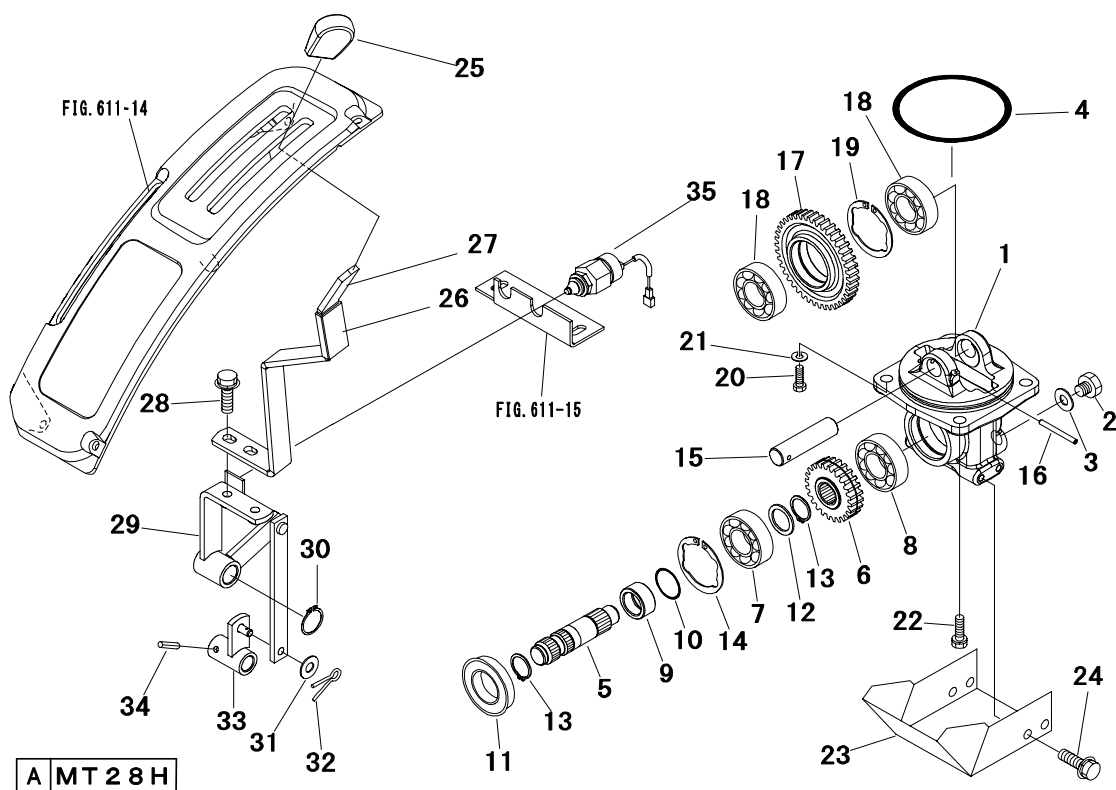
Key No.	Parts No.	Parts Name.	Q'ty				R/P	Application	Description	Remarks
			A							
1	1030 2539 002	PUMP,hydraulic	1							
2	67700-20101	PACKING	1							
3	6000 1201 000	ADAPTER	1						Inc3a	
3a	0830 1100 180	O-RING	1					φ 18		
4	0631 3117 130	ELBOW 90	1						Inc4a	
4a	0830 1100 140	O-RING	1					φ 14		
5	1957 2565 000	HOSE A	1							
6	0631 1113 130	ADAPTER	1						Inc6a	
6a	0830 1100 110	O-RING	1					φ 11		
7	1044 2518 002	ELBOW	1							
8	0050 5000 280	CALMP,hose	2					φ 28		
9	F154 0108 020	BOLT,w/washer	1					M8 × 20		
10	F301 0108 001	NUT,flange	3					M8		
11	1945 2131 AG0	PIPE A HST	1							
12	0833 1001 601	WASHER	2					M16		
13	1030 2534 000	BOLT,eye	1							
14	1180 2163 000	CUSHION	1							
15	1041 2532 000	CLAMP	1							
16	H154 0108 016	BOLT,w/washer	1					M8 × 16		
17	1957 2572 000	HOSE C	1							
18	6000 1125 000	ADAPTER	1						Inc18a	
18a	0830 1100 110	O-RING	1					φ 11		
19	1945 2186 AG0	PIPE B HST	1							
20	0833 1001 601	WASHER,seal	2					M16		
21	1030 2534 000	BOLT,eye	1							
22	1180 2163 000	CUSHION	1							
23	1041 2532 000	CLAMP	1							
24	H154 0108 016	BOLT,w/washer	1					M8 × 16		
25	1945 2185 AG0	PIPE C HST	1							
26	0620 1115 000	UNION	1							
27	1180 2163 000	CUSHION	1							
28	0620 5115 170	ELBOW	1						Inc28a	
28a	0830 1100 140	O-RING	1					φ 14		
29	1964 2552 000	OIL COLLER	1							
30	1957 2534 AG0	BRACKET	1							

FIG. 710 HYDRAULIC LINE (5/5)



Key No.	Parts No.	Parts Name.	Q'ty				R/P	Application	Description	Remarks
			A							
1	1945 2182 AG0	PIPE B PRESSURE	1							
2	0833 1001 600	WASHER,seal	2					M16		
3	1030 2534 000	BOLT,eye	1							
4	0620 3115 170	NIPPLE	1						Inc4a	
4a	0830 1100 140	O-RING	1					φ 14		
5	1945 2183 AG0	PIPE A RETURN	1							
6	0833 1001 600	WASHER,seal	2					M16		
7	1030 2534 000	BOLT,eye	1							
8	0620 5115 170	ELBOW	1						Inc8a	
8a	0830 1100 140	O-RING	1					φ 14		
9	1180 2163 000	CUSHION	3							
10	1957 2536 000	CLAMP	1							
11	H154 0108 035	BOLT,w/washer	1					M8 × 35		
12	1968 2581 000	FILTER OIL	1							
13	1963 2559 AG0	HEAD,filter	1							
14	0620 3115 170	NIPPLE	1						Inc14a	
14a	0830 1100 140	O-RING	1					φ 14		
15	1945 2188 AG0	PIPE D HST	1							
16	0833 1001 600	WASHER,seal	2					M16		
17	1030 2534 000	BOLT,eye	1							
18	1945 2166 AG0	PLATE	1							
19	F154 0108 016	BOLT,w/washer	2					M8 × 16		
20	1958 2551 AG0	PLATE	1							
21	0830 1100 120	O-RING	2					φ 12		
22	F154 0108 025	BOLT,w/washer	2					M8 × 25		
23	1957 2541 AG0	PIPE,return hst	1							
24	0830 1100 140	O-RING	1					φ 14		
25	0833 1002 200	WASHER,seal	1					M22		
26	0830 1100 240	O-RING	1					φ 24		
27	1030 2541 000	BOLT,eye	1							

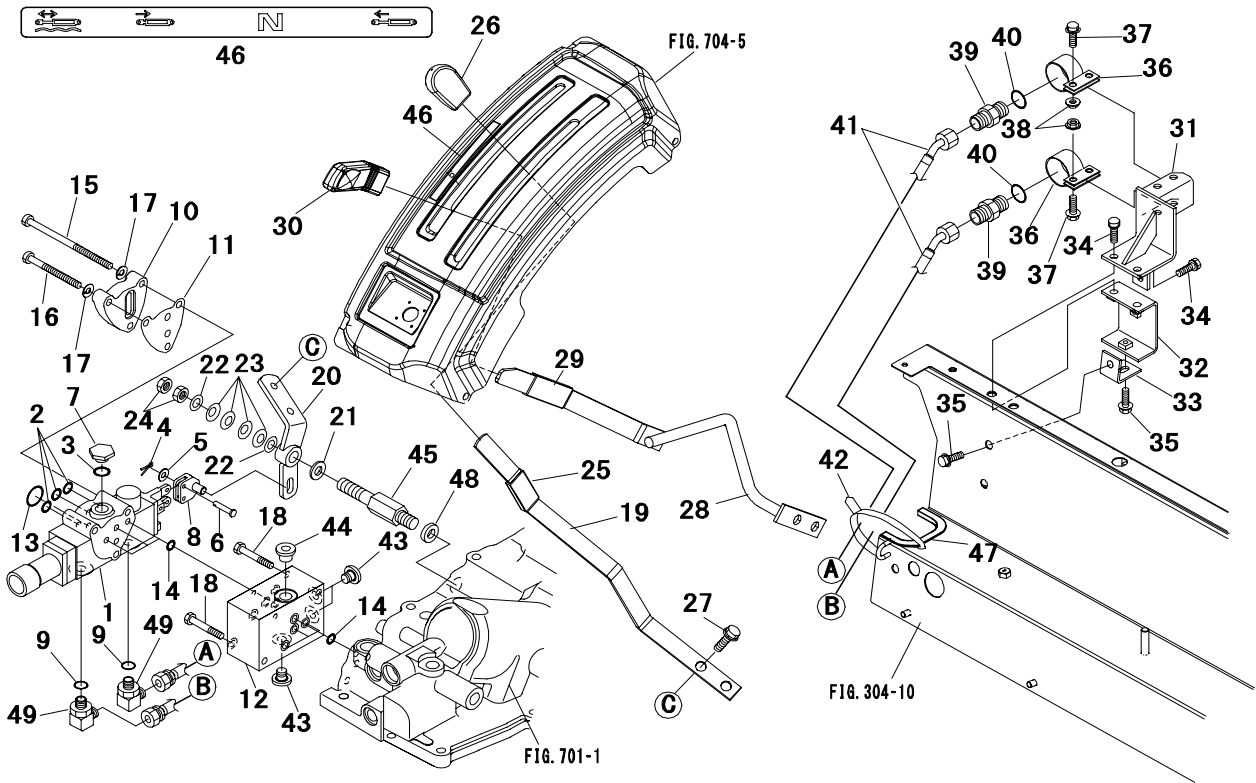
FIG. A01 MID PTO KIT



A MT 2 8 H

Key No.	Parts No.	Parts Name.	Q'ty				R/P	Application	Description	Remarks
			A							
1~19	1218 1241 AG0	MID PTO ASSY	1							
1	1218 1242 000	CASE,mid pto	1							
2	1025 0808 000	PLUG	1							
3	0833 1001 200	WASHER,seal	1					M12		
4	0830 0201 100	O-RING	1					φ 110		
5	1218 1243 000	SHAFT	1							
6	1218 1244 000	GEAR 24T	1					24T		
7	0750 0062 050	BEARING,ball	1					6205		
8	0750 0063 040	BEARING,ball	1					6304		
9	1039 1285 000	BUSHING	1							
10	0830 0200 250	O-RING	1					φ 25		
11	0841 2355 212	SEAL,oil	1							
12	1352 1608 000	RING	1							
13	0740 0002 500	C-RING	2					φ 25		
14	0741 0005 201	C-RING	1					φ 52		
15	1987 1852 000	SHAFT A	1							
16	0550 0005 050	PIN SPRING	1					φ 5 × 50		
17	1218 1245 000	GEAR 41T	1					41T		
18	0750 0063 040	BEARING,ball	2					6304		
19	0741 0005 201	C-RING	1					φ 52		
20	1980 3186 000	BOLT	1							
21	A360 0101 202	WASHER,spring	1					M12		
22	F154 0112 035	BOLT,w/washer	1					M12 × 35		
23	1963 1607 AG0	COVER	1							
24	H154 0108 016	BOLT,w/washer	4					M8 × 16		
25	1044 1769 000	GRIP	1							
26	1044 1768 000	TUBE	1							
27	1215 0805 AG0	LEVER,mid pto	1							
28	H184 0108 025	BOLT,w/washer	2					M8 × 25		
29	1218 1249 AG1	ARM,mid pto	1							
30	0740 0102 000	C-RING	1					φ 20		
31	0350 0140 818	WASHER	1					M8		
32	0520 0125 020	PIN,split	1					φ 2.5 × 20		
33	1218 1251 AG0	LINK,mid pto	1							
34	1038 1725 000	PIN,spring	1							

FIG. A02 SUB VALVE KIT



Key No.	Parts No.	Parts Name.	Q'ty				R/P	Application	Description	Remarks
			ALL							
1~8	1218 5480 000	SUB VALVE ASSY	1							
1~7	1963 2482 AG0	SUB VALVE	1							
1	*	BODY	1							
2	0830 1100 120	O-RING	3					φ 12		
3	0830 0100 160	O-RING	1					φ 16		
4	0520 0112 008	PIN,split	3					φ 1.2 × 8		
5	0350 0120 512	WASHER	3					M5		
6	1155 6501 270	PIN,clevis	3							
7	1155 6501 230	PLUG	1							
8	1964 2483 000	ARM	1							
9	0830 1100 140	O-RING	2					φ 14		
10	1007 2448 AG0	CAP	1							
11	1007 2449 000	PLATE	1							
12	1218 5451 AG0	BLOCK	1							
13	0830 1100 250	O-RING	1					φ 25		
14	0830 1100 101	O-RING	7					φ 10		
15	A054 0108 140	BOLT	1					M8 × 140		
16	A054 0108 085	BOLT	2					M8 × 85		
17	A360 0100 802	WASHER, spring	3					M8		
18	A544 0708 060	BOLT	2					M8 × 60		
19	1215 0906 AG0	LEVER,aux	1							
20	1218 5453 000	ARM,aux	1							
21	2766 1205 000	COLLAR	1							
22	3630 1208 000	LINER	2							
23	0356 0001 601	SPRING CONICAL	4					M16		
24	A301 0116 002	NUT	2					M16		
25	1044 2476 000	TUBE	1							
26	1039 2491 000	GRIP	1							
27	H184 0108 025	BOLT,w/washer	2					M8 × 25		
28	1215 0901 AG0	LEVER P/C	1							
29	1044 2475 000	TUBE	1							
30	1030 2444 000	GRIP	1							
31	1218 5457 AG0	BRACKET	1							
32	1218 5458 000	BRACKET	1							
33	1218 5459 000	BRACKET	1							

Parts No.	Page	Key No.
A647X50170	21	12
A930X94570	21	6
F1025-08022	16	3
F1035-05010	7	8
F1035-06018	13	7
F1035-08016	7	23
F1035-08020	2	8
	10	10
	18	12
F1035-08045	3	6
F1035-12025	1	25
F1435-08025	18	11
F1540108030	3	11
F1540108040	4	5
F1805-06025	9	9
F2300-06000	14	4
F2300-10000	19	10
F2305-18000	6	20
F2320-08000	14	5
F2320-16000	16	12
F2325-08000	7	10
F2500-08000	19	8
F2500-10000	19	12
F2500-18000	6	18
F2515-08000	3	17
	14	6
F2515-10000	19	3
	19	11
F2515-18000	6	19
F2846-05000	1	24
F2846-06000	6	26
F2850-03014	16	5
F3150-00900	22	2
F3150-01800	16	6
	22	7
F3200-01900	7	9
F4202-10000	23	41
F4202-14000	22	9
	23	39
F4300-02000	17	24
F5014-14000	1	12
F5014-25000	5	2
F5014-35000	5	1
K8712630	14	3
M357X81371	20	11
M371X80171	20	6
M800X59471	20	17
MD000961	14	17
MD001380	17	11
MD001521	7	21
MD006704	6	8
MD008762	3	7
MD008784	4	6
MD009014	17	10
MD016483	7	5
MD021105	6	9

Parts No.	Page	Key No.
MD021204	7	15
MD024256	1	22
MD040556	6	23
MD041704	17	17
MD050316	3	18
MD050317	3	19
	22	1
MD065628	14	16
MD068353	9	3
MD068355	9	2
	22	3
MD070717	9	1
	22	4
MD075460	17	18
MD107589	10	23
MD115472	7	6
	22	5
MD602210	20	20
MD603493	12	
MD603495	12	
MD603496	12	
MD607416	20	22
MD607420	20	19
MD607432	20	1
MD607539	20	13
MD607540	20	14
MD611556	21	3
MD611928	21	8
MD618927	21	1
MD701788	16	4
	22	6
MD701789	16	9
MD703856	7	20
MD712517	8	6
MF100026	18	13
MF100064	15	34
MF140026	19	9
MF140227	17	19
MF240031	17	2
MF240051	3	3
	3	21
	4	11
MF241223	16	10
MF241224	15	38
	15	38a
MF241229	10	22
MF241242	17	16
MF241252	13	8
MF241253	18	7
MF241259	18	6
MF241266	17	12
	18	8
MF241280	5	13
MF241282	19	1
MF244860	17	7
MF244863	17	8

Parts No.	Page	Key No.
MF430005	3	16
MF472404	1	18
MF476018	7	22
MF476215	4	9
	6	17
MF660036	16	13
	22	8
MF665532	1	11
MK66112000	10	11
MM316248	17	13
MM398237	3	15
MM400380	4	7
MM406420	14	24
MM408240	2	15
MM408470	5	12
MM409040	10	1
MM409041	10	2
MM409042	10	3
MM409043	10	4
MM409044	10	5
MM409045	10	6
MM409046	10	7
MM409047	10	8
MM409048	10	9
MM409150	15	36
MM409303	17	1~4
MM409304	17	3
MM40931302	17	20
MM409326	17	4
	22	15
MM409327	17	1
MM40941001	20	1~22
MM409427	19	2
MM409645	1	19
MM40967101	15	42
MM409980	16	19
MM413206	10	12
MM430131	9	11
MM43041901	16	8
MM43059801	16	4~8
MM430613	1	10
MM430614	9	8
MM430703	9	7
MM43330601	7	4
MM433673	14	7
MM434541	14	20
MM435249	23	38
MM43594101	12	1~8
MM436867	18	15
MM43721501	2	12
MM500315	11	
MM500370	11	14
MM500441	11	20
MM501098	11	8
MM501846	12	2
MM502329	20	3

Parts No.	Page	Key No.
MM502330	20	4
MM502331	20	5
MM502332	20	18
MM502341	20	15
MM502342	20	16
MM502346	20	21
MM502347	20	10
MM502396	20	12
MM502398	20	2
MM502568	21	5
MM502574	21	13
MM502575	21	14
MM502578	21	2
MM514045	12	8
MM514195	11	17
MM514380	12	7
MS401327	3	14
MS401426	3	12
MS401435	3	13
MS470059	4	4
MS471104	1	14
MS471105	1	15
MS471110	1	16
MS602106	2	10
MS603022	10	20
MS604032	9	12
MS660164	10	21
MS660167	10	19
MS660169	9	13
MS661140	1	13
	5	9
MS665511	1	17
S930P12070	20	9
S930P12170	20	8
04826-22000	1	1
04826-23500	1	2
04827-90130	1	23
0550 0003 020	14	1
05946-01000	10	13
05946-01601	17	14
	23	35
0750 0560 024	6	25
0800 0000 600	1	20
0830 0100 101	14	2
0830 0200 600	23	40
09006-80020	11	16
09013-70130	11	4
09016-10210	11	7
09016-40170	11	9
09017-00170	11	10
09021-00470	11	11
09024-40180	11	18
09024-50210	11	19
09030-10060	11	12
09031-10010	11	
09031-10110	11	21

Parts No.	Page	Key No.
09031-10120	11	
09031-10130	11	
09031-10140	11	
09031-10160	11	
09031-10280	11	
09031-10300	11	
09031-10310	11	
09046-70040	11	15
09311-03840	12	1
09312-10380	12	4
09312-70310	12	3
09317-40070	12	5
09317-51830	12	
09317-51850	12	
09317-51890	12	
09317-51950	12	
09317-51970	12	
09317-51990	12	
09340-05060	12	6
30405-31403	4	10
30A11-00101	3	10
	22	10
30A19-00040	6	12
30A19-10010	6	13
30A19-10020	6	14
30A19-10030	6	15
30A30-00200	18	16
	22	17
30A61-03800	10	20,21
30A63-00101	15	37
	22	14
30A66-00101	19	4
	22	16
30A87-10043	15	42,43
30A87-20403	15	43
30H45-00101	17	6
	22	13
30H66-02300	19	14
30L07-00700	2	18
30L63-00030	14	8,9
30L63-00600	14	15
30L63-00700	14	10
30L63-02100	14	8
30L63-02200	14	25
30L63-02300	14	9
30L63-02400	15	39
30L63-12600	14	11
31A01-01201	5	3
31A01-01301	5	4
31A01-02500	5	5
31A01-02800	5	6
31A01-21100	5	10
31A03-13600	5	7
31A04-00700	7	7
31A04-01301	7	3
31A04-11024	7	10~12

Parts No.	Page	Key No.
31A04-20200	7	2
31A04-30100	7	1
31A04-34100	7	13
31A04-34300	7	14
31A05-00300	4	12
31A05-01300	4	13
31A07-00801	1	3
31A07-02300	2	7
31A07-02401	2	14
	22	19
31A07-02500	1	26
31A07-03100	1	4
31A07-11601	2	5
31A07-11701	2	6
	22	20
31A07-11901	3	2
	22	21
31A07-12200	2	17
	22	22
31A08-04102	2	16
31A09-01010	2	1
31A09-01020	2	2
31A09-01030	2	3
31A09-01040	2	4
31A11-00802	3	4
31A11-02100	3	1
31A11-05101	3	8
31A11-05201	3	9
	22	23
31A11-11101	3	5
	22	24
31A17-00010	6	4
31A17-00020	6	5
31A17-00030	6	6
31A17-09101	6	1
31A17-09201	6	2
31A17-09301	6	3
31A17-10602	6	7
31A21-03800	6	22
31A23-00051	1	20,21
31A23-00600	8	3
31A23-00800	8	2
31A23-01023	8	3,4
31A23-01302	8	7
31A23-01402	8	1
31A23-01502	8	5
31A30-00300	18	4
31A30-00801	18	5
	22	25
31A32-02100	18	14
31A35-02300	16	2
	22	26
31A35-05041	16	11
31A35-30010	16	1
31A40-02100	16	15
31A45-20700	17	9

Parts No.	Page	Key No.
31A46-00020	17	21,22
31A46-01200	22	11
31A46-02300	2	9
31A46-05010	17	24,25
31A46-10101	17	5
	22	27
31A46-11200	17	23
	22	12
31A48-01100	17	15
31A60-00300	10	17
31A61-01200	9	15
31A61-01500	9	14
31A61-07101	9	4
31A61-07201	9	5
31A61-07301	9	6
31A62-00300	13	1~5
31A62-00310	13	1
31A62-00312	13	2
31A62-00317	13	3
31A62-00318	13	4
31A62-00319	13	5
31A63-01010	14	23,24
31A63-01800	14	12
31A63-02301	15	35
31A63-02600	14	13
31A63-02700	14	14
31A63-04700	14	21
31A63-05300	14	22
31A63-10300	14	31
31A63-11061	15	33
31A63-12200	15	41
	22	28
31A63-15200	14	30
31A63-15500	14	26
31A63-25101	15	32
31A63-32100	14	27
31A64-00200	14	18
31A64-00800	15	40
31A64-01080	14	15~20
31A64-01800	14	19
31A65-00201	10	14
31A65-00800	10	15
31A68-00402	21	1~14
31A68-02100	19	7
31A68-20300	19	13
31A90-00300	16	14
31B01-13040	5	1~9
31B01-23200	5	11
	22	29
31B04-00014	7	8~18
31B04-01010	7	15~16
31B04-03011	4	1,2
31B04-13201	4	3
	22	30
31B05-00103	4	8
31B06-07800	4	15

Parts No.	Page	Key No.
31B07-04400	2	13
31B07-52030	1	1~24
31B13-10021	3	18~20
31B19-01023	6	8~11
31B20-00204	6	16
31B20-02601	6	21
31B21-02070	6	23,24
31B30-00040	18	1,2
31B30-00800	18	3
	22	31
31B30-00902	23	37
31B32-00100	18	9
31B32-01200	18	10
	22	32
31B42-21700	16	18
31B61-02600	9	10
31B61-05300	10	18,19
31B61-05311	10	18
31B61-13100	9	11~15
31B62-01200	13	6
31B63-00400	14	28
31B63-00500	14	29
31B63-33010	14	1~30
31B65-00200	10	16
31B65-11300	7	19
31B65-14090	11	1~21
31B66-04100	19	6
31B94-16010	22	1~41
32A04-02401	7	12
32A36-05010	16	16
32A66-03102	19	5
32A91-05100	22	33
32C04-04501	7	17
32C04-06101	7	18
32C39-00200	23	36
32C46-04100	2	11
34340-00700	16	17
	22	18
47X01-06100	11	1
47X01-07600	11	6
47X01-07700	11	5
47X01-13200	11	2
47X01-13300	11	3
47X01-22700	11	13
47X11-00700	20	7
47X11-02304	21	11
47X11-02305	21	4
47X11-02311	21	7
47X11-02312	21	9
47X11-02313	21	10
49168-15200	22	34